

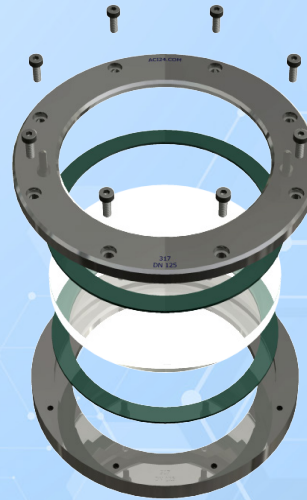
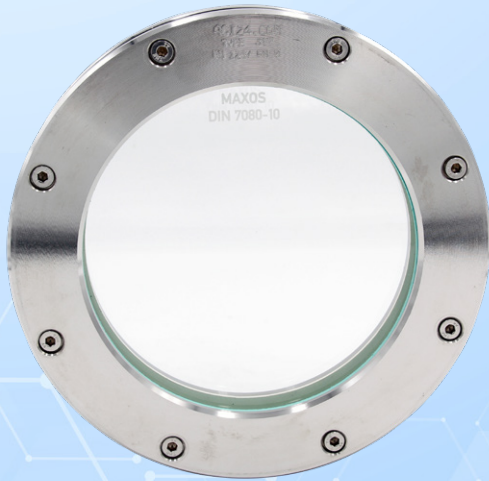


Ebera

Round sight glass fitting PN 0 - pressureless

Welding in or on similar to DIN 28120

Type 317



APPLICATION:

Observation and illumination of the interior of closed vessels (boilers, tanks, silos, etc.). Sightglasses are round flange sockets for welding into or onto the vessel, each complete with a firmly screwed sightglass plate inserted between the gaskets.

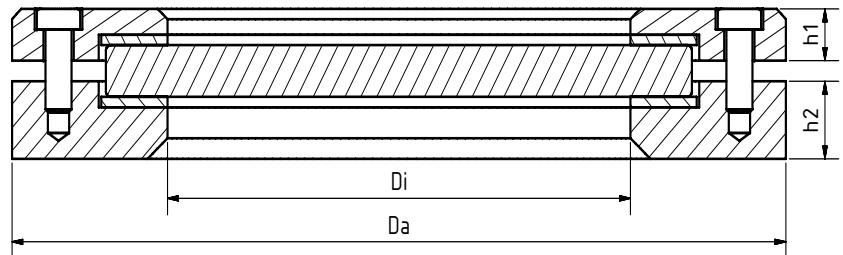
INSTALLATION NOTE:

After welding the base flange onto/into the pressure vessel, the sealing surface must be checked for deformations! Reworking may be required! Observe the listed torque values for remounting the cover flange! The pressure rating does not consider the base flange. This will have to be audited together with the pressure vessel according to AD 2000 instructions B9 or equivalent standard!

Similar to DIN 28120
pressureless operation
($\Delta P \leq 0.5 \text{ bar}$)

Operating conditions:

Temperature: (depending on glass and gasket)	150 °C 280 °C 400 °C ¹
Pressure:	≤0,5 Bar



Materials:

Flange:	1.4571
Glass:	Borosilicate glass DIN 7080 Soda-lime glass DIN 8902 Borofloat Glass
Gasket:	PTFE; FKM; NBR; C4400; Silicone; EPDM; Graphite
Screws:	A4-70
Special materials on request	

DN	50	80	100	125	150	200	300	400
Da	140	165	190	215	240	290	360	480
Di	80	100	125	150	175	225	300	370
h1	10	10	10	10	10	10	15	15
h2	15	15	15	15	15	15	20	25
kg	2,5	3,0	3,6	4,1	5,4	8,9	9,9	14
Nm	6 ²	5 ²	6 ²	7 ²	7 ²	9 ²	9 ²	10 ²

¹ high temperature on request ² graphite gasket



Ebora

Round sight glass fitting PN 0 - pressureless

Welding in or on similar to DIN 28120

Type 317

PRODUCTCODE:

Group	TYPE	DN	Base flange*	Glass	Gasket	Variant
11	317	50 80 100 125 150 200 300 400	1: 1.4571	1: Borosilicate glass (Boro) DIN 7080 2: Soda lime glass (SLG) DIN 8902 3: Quartz glass 4: Boro + PTFE wiper 5: Boro + silicone wiper 6: SLG + PTFE wiper 7: SLG + silicone wiper 8: Borofloat glass	1: PTFE 2: FKM 3: NBR 4: C4400 5: Silicone 6: EPDM 7: Graphite 8: Special	G00: Boro with Mica shield (bis 320°C) Assigned by ACI if required

INFO: Unless otherwise stated, the factory standard highlighted is supplied.

*Cover flange according to quotation / order confirmation.

SPECIAL DESIGNS/OPTIONS:

- a) Wiper SWI with PTFE or silicone Wiper blade
- b) LED or halogen lights, ATEX-certified, EX

EXAMPLE:

11-317-100-1-1-7-000 equals the product code:

ACI Type 317

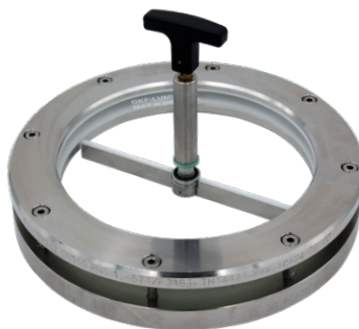
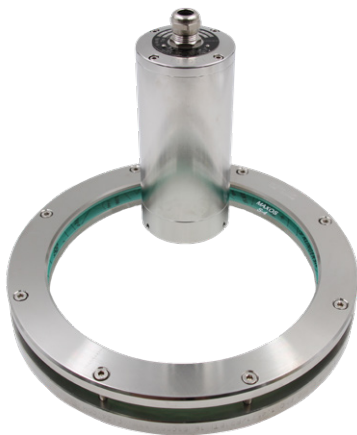
DN100

Base flange 1.4571

borosilicate glass

gasket graphite

standard version



RECOMMENDATION:

For aggressive media or steam, mica discs should be used to protect the glass.

Contact in Germany:

ACI Industriearmaturen GmbH

Tel. +49 (0) 2403 748 850

info@aci24.com • www.aci24.com

Contact in The Netherlands:

Ebora Process Automation

info@ebora.nl

http://ebora.nl

20190903

Technical changes and errors reserved!