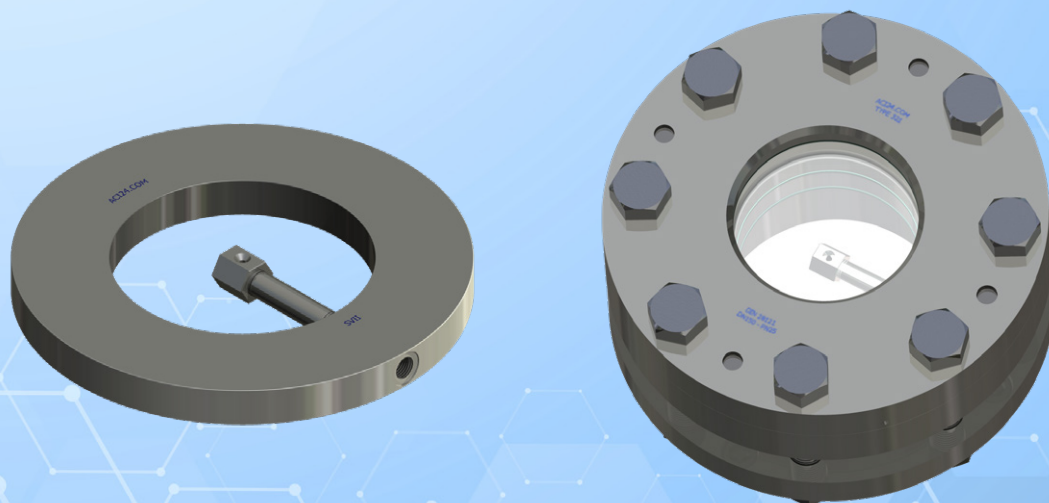


Spraying device Option

for round sight glass fittings, flange mounting

SVII



APPLICATION:

For automatic or continuous cleaning as required of glass plates in sight glass fittings; suitable for pressure or vacuum vessels requiring inspection in potentially explosive and non-explosive locations.

INSTALLATION INSTRUCTIONS:

Installed with flange gaskets between base flange and pipe / system flange. With lateral connection winch G 1/4" for washing process. The installation is possible without great effort even with existing sight glasses.

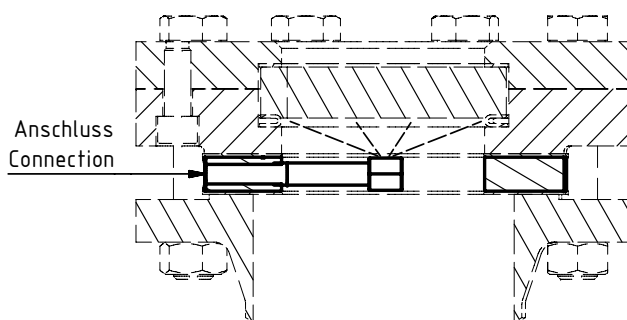
For round sight glass fittings according to and similar to DIN 28121 for flange mounting

Operating conditions:

Temperature:	According to the design of the sight glass fitting.
Pressure:	

Materials:

1.4571; 1.4404; 14403
Other materials on request



POSSIBLE COMBINATIONS:

It is possible to combine the spraying device with lights and wipers at the same time. The maximum permissible temperatures and the thermal shock resistance of the sight glass plate must be observed!

ORDERING SPECIFICATIONS!

Should a sight glass fitting according to DIN 28121 be supplied, the following information is required:

- Sightglass fitting (DN/PN), materials
- Type of sight glass plate (borosilicate glass / soda lime glass) and dimensions

Contact in Germany:
ACI Industriearmaturen GmbH
Tel. +49 (0) 2403 748 850
info@aci24.com • www.aci24.com

Contact in The Netherlands:
Ebora Process Automation
info@ebora.nl
http://ebora.nl

20190903

Technical changes and errors reserved!