



## PIPE EXPANSION JOINTS

*Pipe expansion joints are being used in order to absorb expansion and shrinkage movements of heating and hot water pipelines of High buildings. Pipe expansion joints are installed vertically and provides the system to work safely by its bellows.*

*There is 3 mm expansion in the pipelines with temperature 90/70 c. The expansion of 7 floor (21mt) building can be absorbed by elbows at air pipeline and main pipeline. It is obligatory to use pipe expansion joints for buildings which is higher than 10 floors and it has to be installed in every 30 meters (10 floors).*

**Connection:**

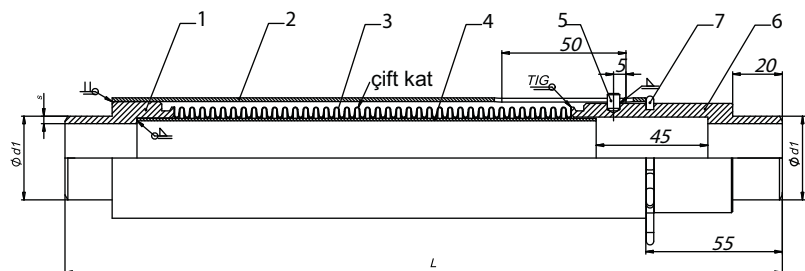
*Screwed or Butt-weld*

**Nominal Sizes:**

*From 1/2" to 2" screw connection, bigger sizes up to DN150 butt-weld*

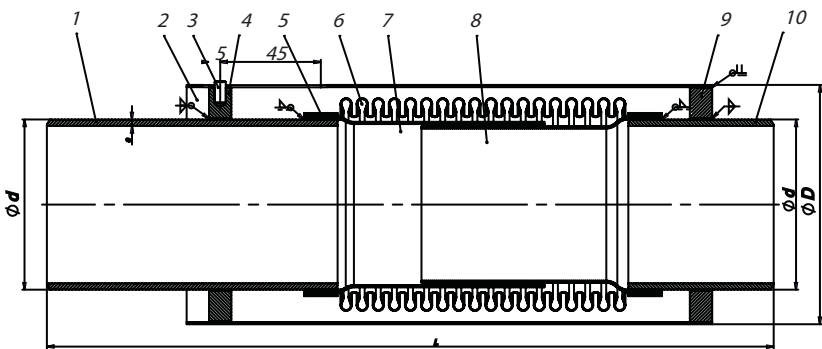
**Working Pressure and Temperature:**

*PN40, 100°C*

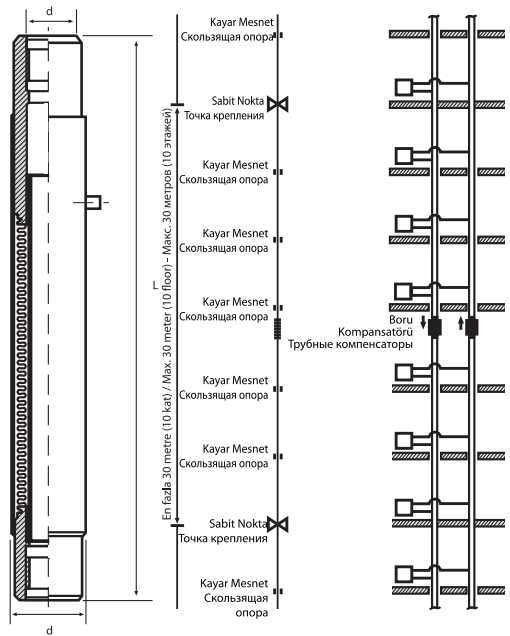


HLS-50-BKB					
Size	Ø d1	s	L	Axial springrate	Life cycles
15	21,3	3	300	51 N/mm.	1227
20	26,9	3	300	51 N/mm.	1227
25	33,7	3,5	300	43,5 N/mm.	1254
32	42,4	3,5	350	38,1 N/mm.	2917
40	48,3	4	350	37,1 N/mm.	3849
50	60,3	4	350	37,1 N/mm.	3849

7	1	Welding end (long)	Carbon Steel			
6	1	Segmet	Carbon Steel			Zn Coated
5	1	Pin	Carbon Steel			
4	1	Internal Pipe	Carbon Steel			
3	1	Hose	Stainless Steel			
2	1	Outer Pipe	Carbon Steel			
1	1	Welding end (short)	Carbon Steel			
ITEM	QTY	PART NAME	MATERIAL	SIZE	DRAWING NO	EXPLANATION



HLS-50-BKB						
Size	Ød	ØD	s	L	Axial springrate	Life cycles
65	76,1	107	2,9	350	62,8 N/mm.	2306
80	88,9	127	3,2	350	89,1 N/mm.	1607
100	114,3	158	3,6	350	66,5 N/mm.	4703



10	1	Welding end 2	Carbon Steel			
9	1	Ring 2	Carbon Steel			
8	1	Inner Sleeve 2	Stainless Steel			
7	1	Inner Sleeve 1	Stainless Steel			
6	1	Bellow	Stainless Steel			
5	1	Band	Stainless Steel			
4	1	Ring	Carbon Steel			
3	1	Pin	Carbon Steel			
2	1	Outer Sleeve	Carbon Steel			
1	1	Welding end 1	Carbon Steel			
ITEM	QTY	PART NAME	MATERIAL	SIZE	DRAWING NO	EXPLANATION