

SUCTION STRAINER

DIN

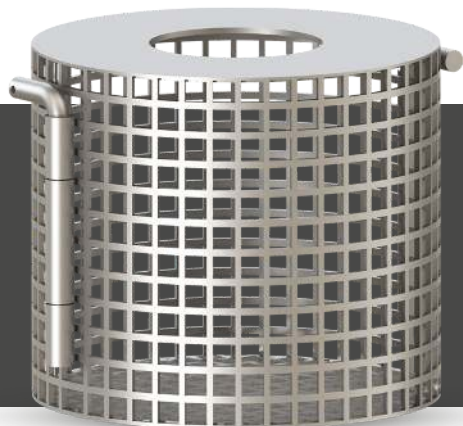
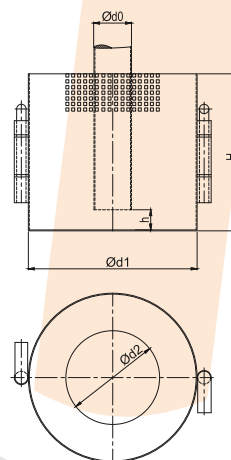


Fig 873PX

Steel

■ DIN 87160



DN [mm]	Ød0 [mm]	Ød1 [mm]	Ød2 [mm]	H [mm]	H1 [mm]	Weight [Kg]	IMPA	Order Code
20	26.9	85	30	80	12	0.3	-	873PX020
25	33.7	85	37	80	12	0.4	-	873PX025
32	42.4	100	45	90	12	0.5	-	873PX032
40	48.3	125	51	100	12	0.7	-	873PX040
50	60.3	150	63	125	15	0.9	-	873PX050
65	76.1	200	79	160	22	1	-	873PX065
80	88.9	225	92	200	24	2	-	873PX080
100	114.3	275	117	240	30	3	-	873PX100
125	-	-	-	-	-	-	-	873PX125
150	168.3	400	172	365	45	6	-	873PX150
175	-	-	-	-	-	-	-	873PX175
200	219.1	450	224	430	50	13	-	873PX200
250	273.0	600	280	600	800	17	-	873PX250
300	318.0	750	325	700	95	25	-	873PX300
350	368.0	860	374	800	110	30	-	873PX350

*All information are indicative data. JONAS has the rights to make changes without prior notice.