



Cable entry system



Overview



KDL/E

The KDL/E reflects continuing development of the KDL in its 3rd generation. Pre-fabricated cables can be inserted even more simply and quickly, e.g. into enclosures. Quicker assembly at double the capacity.

From page 13



KDL

The KDL is a two-part plate that serves to insert pre-fabricated cables. Cables with plugs can be simply inserted into enclosures.

From page 25



KDL/EMV

The KDL/EMV is a metallized cable entry system. Pre-fabricated cables can be inserted simply into enclosures. At the same time, sheath currents can also be discharged using this plate.

From page 43



KDL/S

The KDL/S is a custom cable entry system. It is manufactured to meet the customer's specifications. Various cables shapes can be inserted using this plate.

From page 54



KDL Accessories

This section contains blanking plates, adapter plates and discharge plates.

From page 63

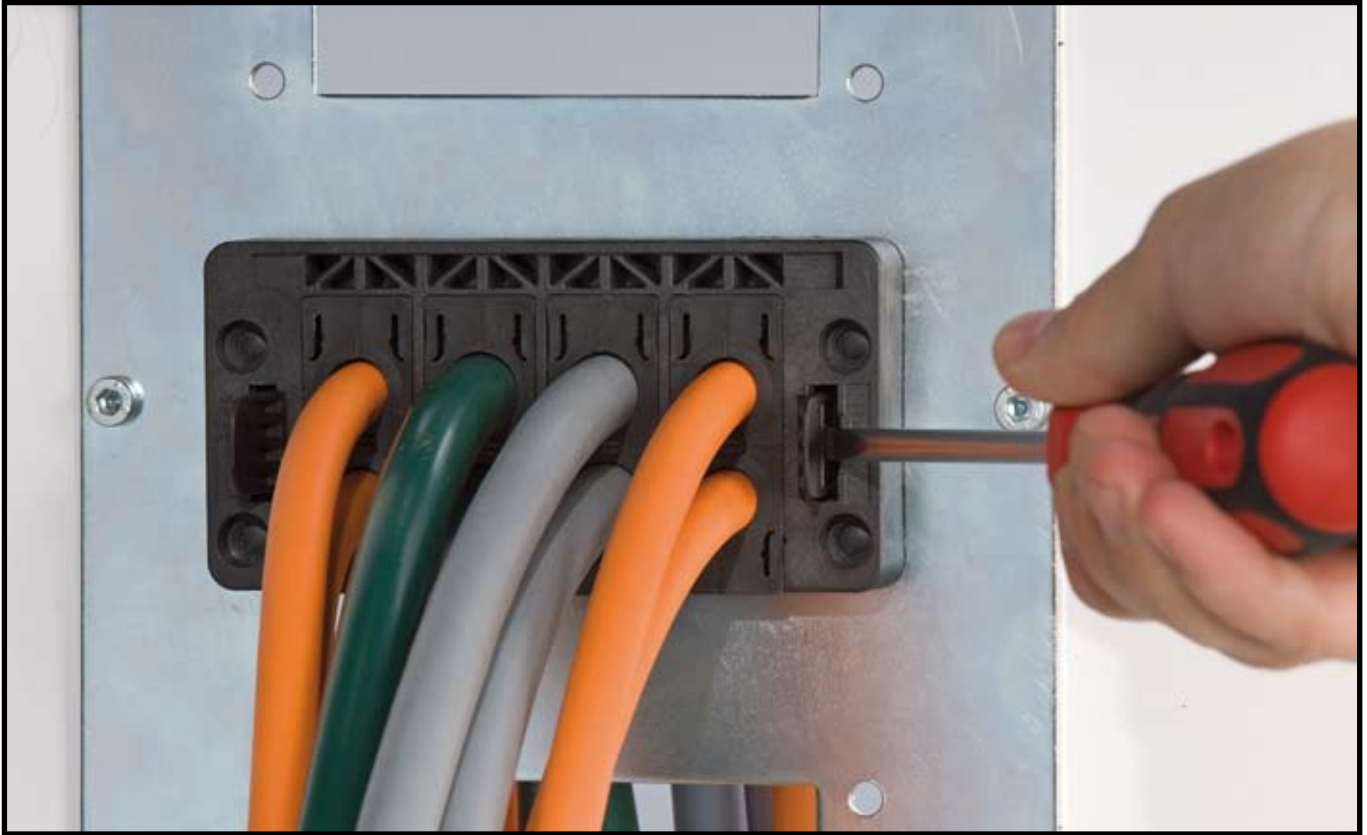


KDL/E cable entry system





Advantages



Go at everything head first

Even faster and simpler assembly of pre-fabricated conduits.

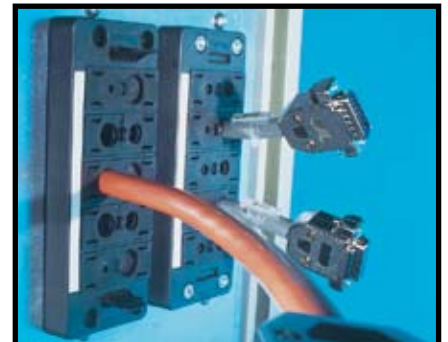
The KDL/E replaces the tried-and-true KDL/N model.

The single-piece frame no longer needs to be joined together.

The provided catch hooks significantly speed up mounting of the entire plate, e.g. on the control cabinet.

Variable grommets reduce the need for grommets with different diameters.

This ultimately means significantly simpler and quicker assembly in general.



- ✓ Cable insertion without interruption
- ✓ Easy assembly
- ✓ Single-piece frame
- ✓ Snap-in from 0.06 – 0.16 inch
- ✓ No need to screw on
- ✓ Strain relief
- ✓ Protection class IP 54.



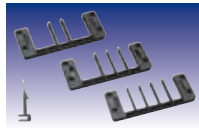
Page 18



Cable entry system Type KDL/E 16

Cable entry system for cut-outs for 16-pole connectors e.g. Harting or Wieland.

Page 19



Cable entry system Type KDL/E 24

Cable entry system for cut-outs for 24-pole connectors e.g. Harting or Wieland.

Page 20



Cable entry grommet Type KDT/xE

Cable entry grommet with strain relief for cable insertion.
Fits KDL/E frames.



KDL/E cable entry system

Selection table

		Cable entry grommets	
		Type KDT/ZE	
		Cable diameter	Cable diameter
		0.12 - 0.63 inch (3 - 16 mm)	0.63 - 1.22 inch (16 - 31 mm)
Cable entry system	Order no.	Opening, small	Opening, large
KDL/E 16/2	87121010	0	2
KDL/E 16/5	87121012	4	1
KDL/E 16/8	87121014	8	0
KDL/E 24/4	87121016	2	2
KDL/E 24/7	87121018	6	1
KDL/E 24/10	87121020	10	0

Material data



Type	Material	Temperature		Fire classification UL 94	RoHS Compliant	IP protection class	Approvals UR	Halogen-free	Phosphorous-free	Cadmium-free	Asbestos-free	Lead-free	Silicone-free
		Min.	Max.										
KDL/E 16	Polyamide	-40 °F	284 °F	V0	✓	IP 54	✓	✓	✓	✓	✓	✓	✓
KDL/E 24	Polyamide	-40 °F	284 °F	V0	✓	IP 54	✓	✓	✓	✓	✓	✓	✓
KDT/xE	Thermoplastic rubber	-40 °F	176 °F	HB	✓	IP 54	✓	✓	✓	✓	✓	✓	✓

** = not certified

Ebora Process Automation

Tel: +31 (0)26-3706830 · Fax: +31 (0)26-3706831 · info@ebora.nl · www.ebora.nl



KDL/E cable entry system



Cable entry system, type KDL/E 16

RoHS
compliant



-40 to 284 °F



Polyamide



V0



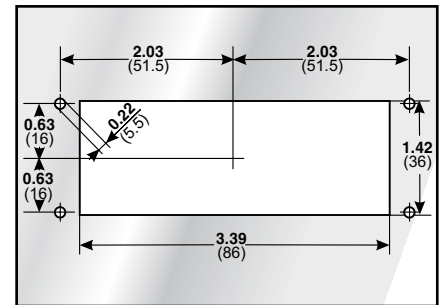
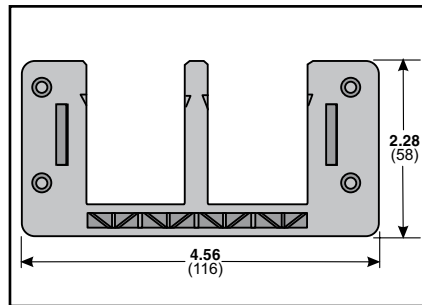
IP 54
(with suitable grommets and cables)

The KDL/E represents the 3rd generation of cable entry system.

- Even quicker mounting of pre-assembled cables.
- Snap in, meaning screwing on is no longer absolutely necessary
- Catch hook for 0.06 - 0.08 inch plate thickness included with delivery, additional catch hooks for up to 0.16 inch plate thickness available
- Fits standard cut-outs for connectors (e.g. Harting, Wieland and Rittal)
- Simple realization of EMC solution with discharge plate



KDL/E 16/x



Type	Order no.	Color	No. of openings small / large	Installation height inch	For plate thickness inch	Pack qty
KDL/E 16/2	87121010	black	- / 2	0.61	-	1
KDL/E 16/5	87121012	black	4 / 1	0.61	-	1
KDL/E 16/8	87121014	black	8 / -	0.61	-	1
Replacement parts:						
Catch hooks 0.06-0.08 inch	8712102000	black	-		0.06 - 0.08	1
Catch hooks 0.08-0.11 inch	8112101800	black	-		0.08 - 0.11	1
Catch hooks 0.11-0.13 inch	8712101600	black	-		0.11 - 0.13	1
Catch hooks 0.14-0.16 inch	8712101400	black	-		0.14 - 0.16	1
Matching grommets KDT/ZE; KDT/VE; ATG/E; SDT/ZE; BTK/E; BTG/E						
Matching EMV discharge plate in chapter «Accessories Cable entry system» KDL/N-AB...						
Matching label plate:						
KS KDL/E	86421090					100
The right tool for cut-out production can be found in the chapter «Punching tools»						



Cable entry system, type KDL/E 24

RoHS
compliant



-40 to 284 °F



Polyamide



V0



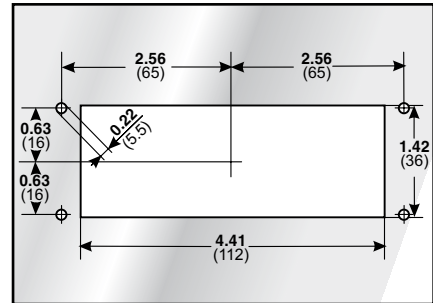
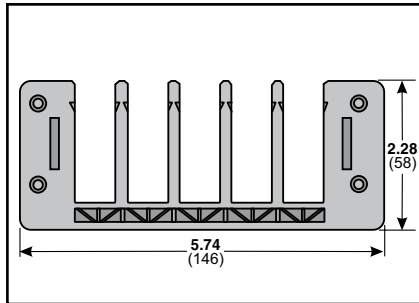
IP 54
(with suitable grommets and cables)

The KDL/E represents the 3rd generation of cable entry system.

- Even quicker mounting of pre-assembled cables.
- Snap in, meaning screwing on is no longer absolutely necessary
- Catch hook for 0.06 - 0.08 inch plate thickness included with delivery, additional catch hooks for up to 0.16 inch plate thickness available
- Fits standard cut-outs for connectors (e.g. Harting, Wieland and Rittal)
- Simple realization of EMC solution with discharge plate



KDL/E 24/x



Type	Order no.	Color	No. of openings small / large	Installation height inch	For plate thickness inch	Pack qty
KDL/E 24/4	87121016	black	2 / 2	0.61	-	1
KDL/E 24/7	87121018	black	6 / 1	0.61	-	1
KDL/E 24/10	87121020	black	10 / -	0.61	-	1
Replacement parts:						
Catch hooks 0.06-0.08 inch	8712102000	black	-	-	0.06 - 0.08	1
Catch hooks 0.08-0.11 inch	8712101800	black	-	-	0.08 - 0.11	1
Catch hooks 0.11-0.13 inch	8712101600	black	-	-	0.11 - 0.13	1
Catch hooks 0.14-0.16 inch	8712101400	black	-	-	0.14 - 0.16	1
Matching grommets KDT/ZE; KDT/VE; ATG/E; SDT/ZE; BTK/E; BTG/E						
Matching EMV discharge plate in chapter «Accessories Cable entry system» KDL/N-AB...						
Matching label plate:						
KS KDL/E	86421090					100
Matching adapter plates type KDP 24/AP/xx for the assembly of multiple KDL/E 24 in standardized cut-outs (Rittal/Lohmeier/Ensto) see chapter «Cable entry plate KDP plastic»						
The right tool for cut-out production can be found in the chapter «Punching tools»						



KDL/E cable entry system

Cable entry grommets, type KDT/xE

RoHS
compliant



-40 to 176 °F



Thermoplastic rubber



HB

In conjunction with the KDL/E cable entry system, the KDT/xE cable entry grommet can be used to easily route pre-assembled cables e.g. in control cabinets. The grommet is 2-pce. and is positioned about the cable. The grommets are equipped with catch hooks that anchor themselves in the KDL/E when installed. Strain relief for type KDT/ZE is achieved using a simple cable tie. Type KDT/VE is a variable grommet without strain relief which covers a larger clamping range.



Standard grommets



Special grommets



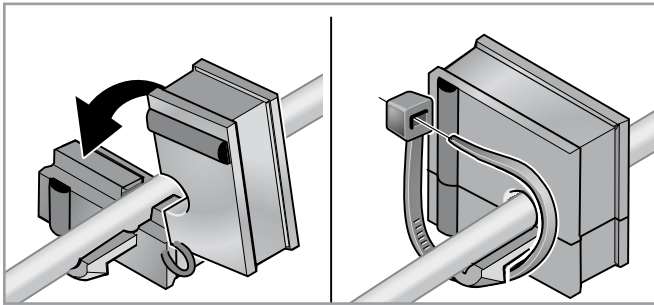
Type	Order no.	Color	for Ø inch	for opening small / large	No. Openings	Suitable for conduit	Pack qty
Grommet, small							
KDT/ZE 03	87121210	black	0.12 - 0.16	● / -	1		10
KDT/ZE 04	87121212	black	0.16 - 0.20	● / -	1		10
KDT/ZE 05	87121214	black	0.20 - 0.24	● / -	1		10
KDT/ZE 06	87121216	black	0.24 - 0.28	● / -	1		10
KDT/ZE 07	87121218	black	0.28 - 0.31	● / -	1		10
KDT/ZE 08	87121220	black	0.31 - 0.35	● / -	1		10
KDT/ZE 09	87121222	black	0.35 - 0.39	● / -	1		10
KDT/ZE 10	87121224	black	0.39 - 0.43	● / -	1		10
KDT/ZE 11	87121226	black	0.43 - 0.47	● / -	1		10
KDT/ZE 12	87121228	black	0.47 - 0.51	● / -	1		10
KDT/ZE 13	87121230	black	0.51 - 0.55	● / -	1		10
KDT/ZE 14	87121232	black	0.55 - 0.59	● / -	1		10
KDT/ZE 15	87121234	black	0.59 - 0.63	● / -	1		10
Grommet, large							
KDT/ZE 16	87121236	black	0.63 - 0.67	- / ●	1		10
KDT/ZE 17	87121238	black	0.67 - 0.71	- / ●	1		10
KDT/ZE 18	87121240	black	0.71 - 0.75	- / ●	1		10
KDT/ZE 19	87121242	black	0.75 - 0.79	- / ●	1		10
KDT/ZE 20	87121244	black	0.79 - 0.83	- / ●	1		10
KDT/ZE 21	87121246	black	0.83 - 0.87	- / ●	1		10
KDT/ZE 22	87121248	black	0.87 - 0.91	- / ●	1		10
KDT/ZE 23	87121250	black	0.91 - 0.94	- / ●	1		10
KDT/ZE 24	87121252	black	0.94 - 0.98	- / ●	1		10
KDT/ZE 25	87121254	black	0.98 - 1.02	- / ●	1		10
KDT/ZE 26	87121256	black	1.02 - 1.06	- / ●	1		10
KDT/ZE 27	87121258	black	1.06 - 1.10	- / ●	1		10

Ebora Process Automation

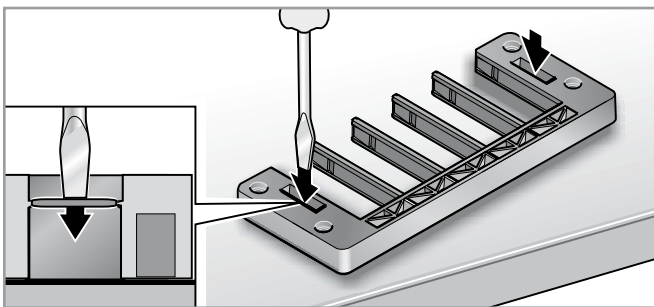
Tel: +31 (0)26-3706830 · Fax: +31 (0)26-3706831 · info@ebora.nl · www.ebora.nl



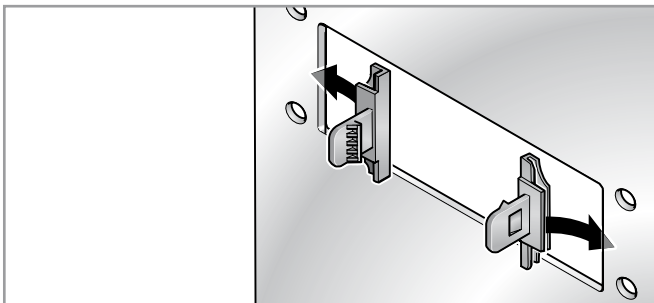
Snap-on mounting



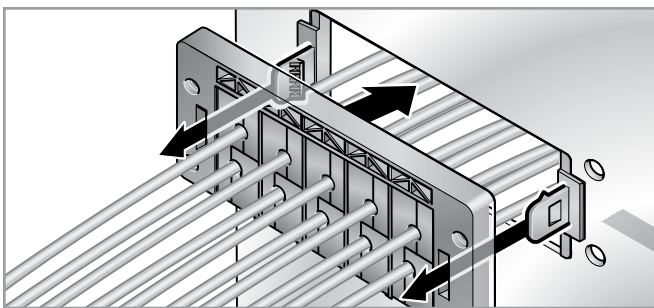
Lay cable into appropriate grommet and provide strain relief where necessary using cable ties.



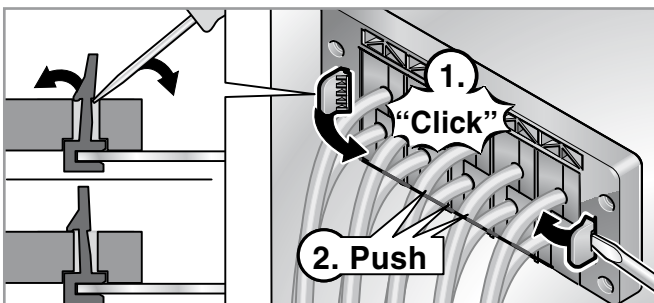
Use appropriate tool to punch through cover on base frame.



Set catch hooks into the sides of the cut-out. Mind the plate thickness.

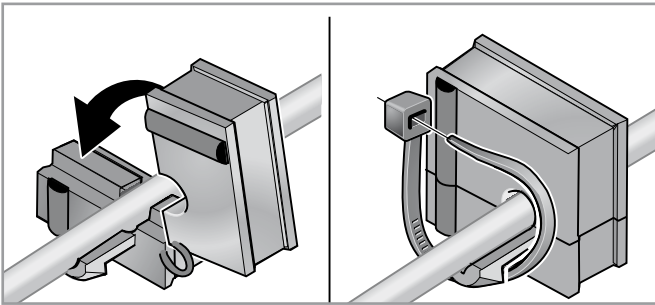


Insert housing completely. The grommet must produce a continuous seal on the back side. Set the housing onto the catch hooks and press on.

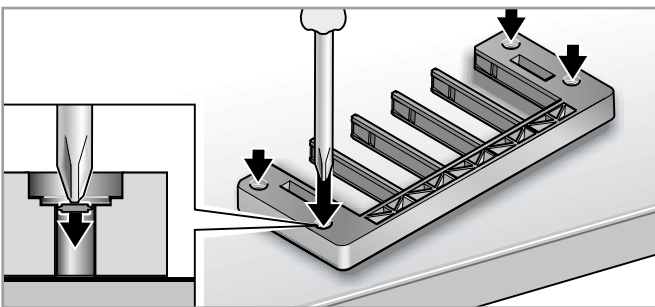


Lock the catch hooks with the housing. Press gently on grommet one more time.

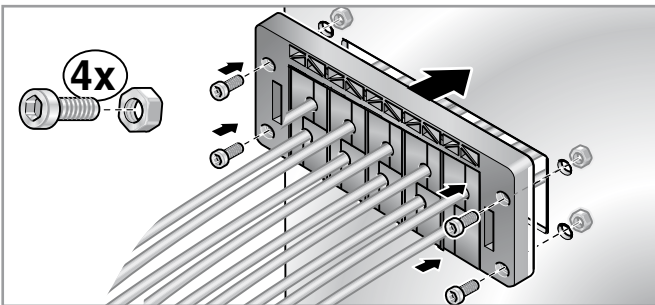
Screw-on mounting



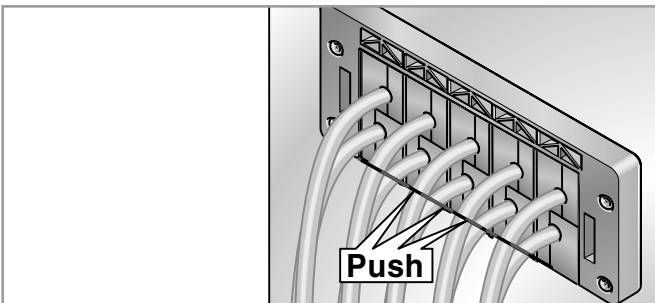
Lay cable into appropriate grommet and provide strain relief where necessary using cable ties.



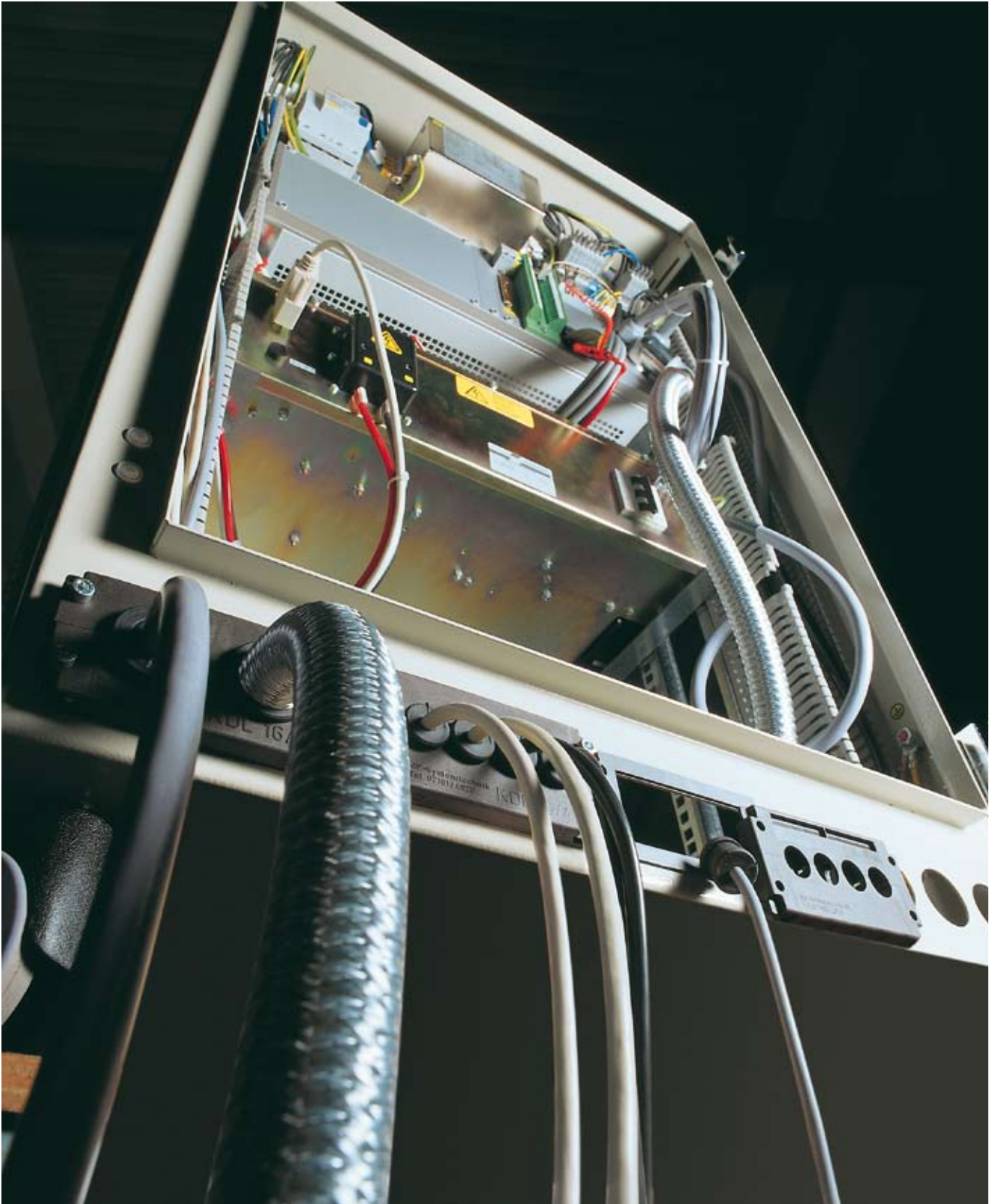
Use appropriate tool to punch through cover on base frame.



Insert housing completely. The grommet must produce a continuous seal on the back side. Affix housing with 4 screws. Do not exceed the maximum torque.



Press gently on grommet one more time.



Ebora Process Automation

Tel: +31 (0)26-3706830 · Fax: +31 (0)26-3706831 · info@ebora.nl · www.ebora.nl

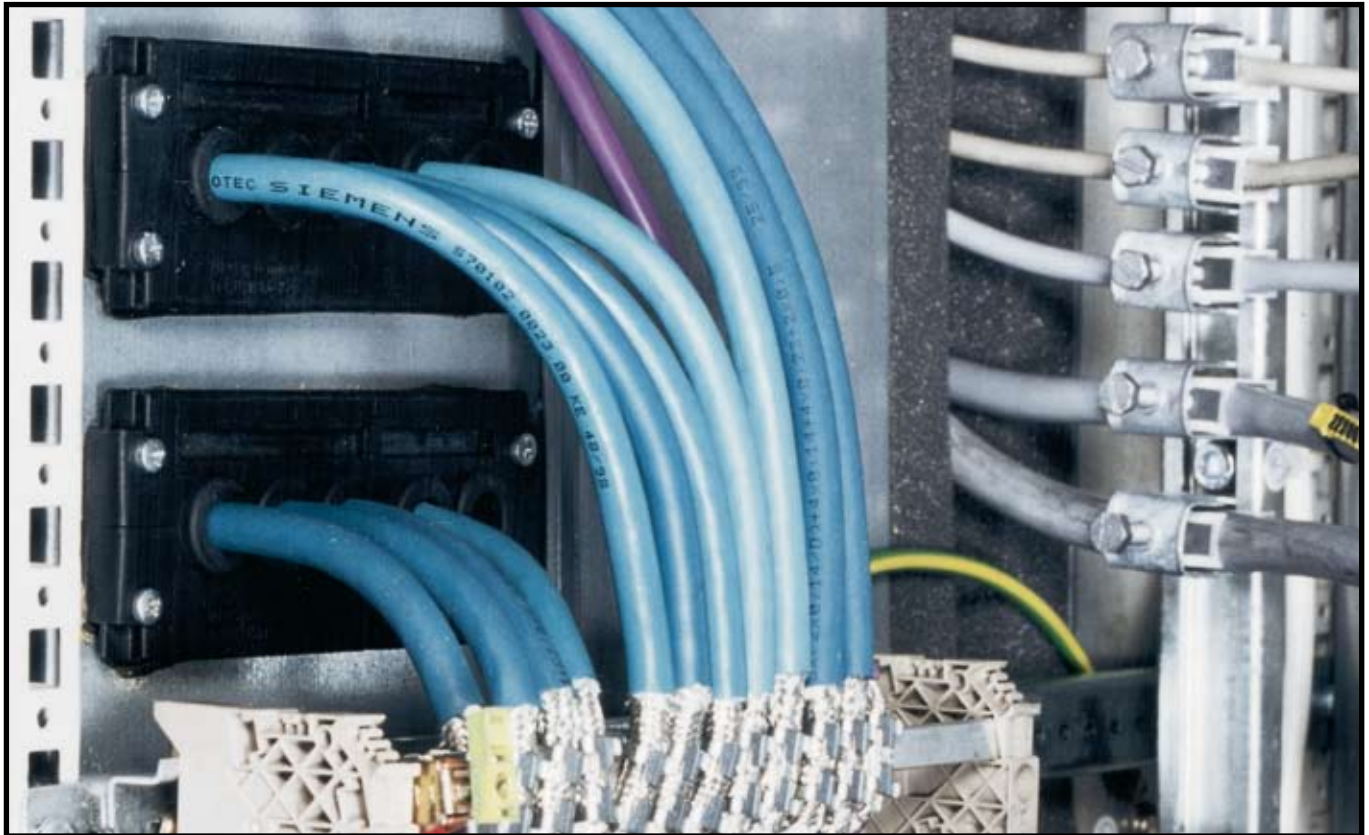


KDL cable entry system





Advantages



Mount high-tech plugs securely in the control cabinet

No need to keep cutting the plug off your cable!

It is so easy to introduce pre-assembled plugs into the control cabinet. Cables with attached plugs are often high-tech products that cannot be cut without invalidating the guarantee for the system.

Thanks to the split housing and the split grommets, the cable with plug can be easily mounted in the cable entry system.

As the saying goes: it's an open and shut case!

The KDL can quickly and simply insert up to 30 cables the control cabinet.



- ✓ Uninterrupted cable insertion
- ✓ Easy assembly
- ✓ Strain relief
- ✓ Protection class IP 54.
- ✓ High packing density
- ✓ Cable & plug manufacturer's system guarantee remains valid

Overview

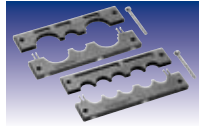
Page 30



Cable entry system Type KDL 16...

Cable entry system for cut-outs for 16-pole connectors
e.g. Harting or Wieland.

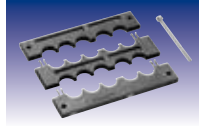
Page 31



Cable entry system Type KDL 24...

Cable entry system for cut-out sizes 24-pole connectors
e.g. Harting or Wieland.

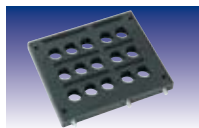
Page 32



Cable entry system Type KDL 2/10

Cable entry system for 10 cable entry grommets.

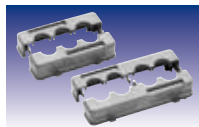
Page 33



Cable entry system Type KDL 3/15

Cable entry system for 15 cable entry grommets.

Page 34



Cable entry connector housing type KD/SG, KD/AG

Connector housing on the basis of Rittal cable connector
16 pole and 24 pole.

Page 36



Cable entry grommet Type KDT/Z

Standard grommets, some with strain relief for cable insertion.
Fits all KDL frames and KD/SG.

Page 38



Cable entry grommet Type KDT/Z-L

Cable entry grommets PWIS-free. Suitable for use in applications
like painting equipment. Fits all KDL frames and KD/SG

Page 40



Cable entry grommet Type KDT/Z-VO

Cable entry grommets, self-extinguishing.
Fire classification VO. Fits all KDL frames and KD/SG.



KDL cable entry system

Selection table

			Cable entry grommets	
			Type KDT/Z	
			Cable diameter	Cable diameter
			0.12 - 0.63 inch (3 - 16 mm)	0.63 - 1.14 inch (16 - 29 mm)
Cable entry system	Color	Order no.	Opening, small	Opening, large
KDL 16/2	black	87171010	0	2
	grey	87171050		
KDL 16/4	black	87171012	4	0
	grey	87171052		
KDL 24/3	black	87171014	1	2
	grey	87171054		
KDL 24/5	black	87171016	5	0
	grey	87171056		
KDL 2/10	black	87171017	10	0
	grey	87171057		
KDL 3/15	black	87171018	15	0
KD/SG-16/3	grey	87171032	3	0
KD/SG-24/4	grey	87171034	4	0

Material data

Type	Material	Temperature		Fire classification UL 94	RoHS Compliant	IP protection class	Approval for railroad use			Halogen-free	Phosphorous-free	Cadmium-free	Asbestos-free	Lead-free	Silicone-free
		Min.	Max.				DB	SNCF	BS						
KDL 16/x	Polyamide	-40 °F	284 °F	VO	✓	IP 54	✓	✓	✓	✓	✓	✓	✓	✓	✓
KDL 24/x	Polyamide	-40 °F	284 °F	VO	✓	IP 54	✓	✓	✓	✓	✓	✓	✓	✓	✓
KDL 2/10	Polyamide	-40 °F	284 °F	VO	✓	IP 54	✓	✓	✓	✓	✓	✓	✓	✓	✓
KDL 3/15	Polyamide	-40 °F	284 °F	VO	✓	IP 54	✓	✓	✓	✓	✓	✓	✓	✓	✓
KD/SG	Polycarbonate	-40 °F	257 °F	VO	✓	IP 54				✓	✓	✓	✓	✓	✓
KD/AG	Polycarbonate/Steel Aluminum/ Steel	-40 °F	257 °F		✓	IP 54				✓	✓	✓	✓	✓	✓
KDT/Z	Thermoplastic rubber	-40 °F	176 °F	HB	✓	IP 54		✓	✓	✓	✓	✓	✓	✓	✓
KDT/Z-L	Thermoplastic rubber	-40 °F	176 °F	HB	✓	IP 54				✓	✓	✓	✓	✓	✓
KDT/Z-VO	Thermoplastic rubber	-40 °F	176 °F	HB	✓	IP 54				✓	✓	✓	✓	✓	✓

** = not certified

Cable entry system, type KDL 24/x

RoHS
compliant



-40 to 284 °F



Polyamide



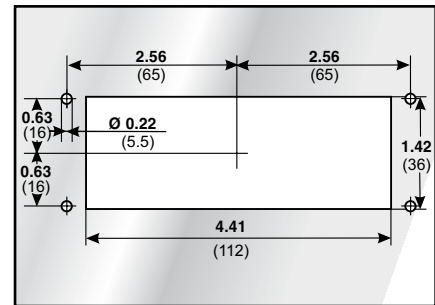
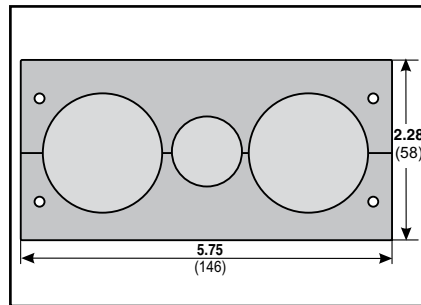
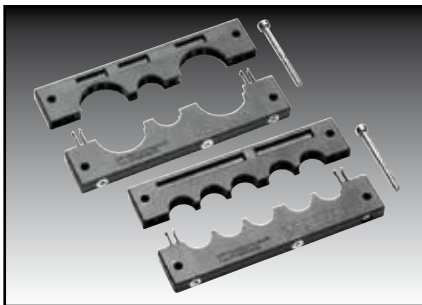
V0



IP 54
(with suitable grommets and cables)

The KDL 24/x is a cable insertion housing for inserting pre-assembled cables. Suitable for cut-outs for 24-pin Harting and Wieland connectors.

- Simple mounting of pre-assembled cables.
- Fits standard cut-outs
- Simple strain relief for the conduits using cable ties
- Simple realization of EMC solution with discharge plate.



KDL 24...

Type	Order no.	Color	No. of openings small / large	Installation height inch	Pack qty
KDL 24/3	87171014	black	1 / 2	0.39	1
KDL 24/5	87171016	black	5 / -	0.39	1
KDL 24/3	87171054	gray	1 / 2	0.39	1
KDL 24/5	87171056	gray	5 / -	0.39	1
Replacement parts:					
Replacement seal KDL24	87980004				1
Matching grommets					
KDT/Z; BTK 17; BTG 32; ATG; KDT/ASI; SDT/Z					
Matching EMC discharge plate in chapter «Accessories Cable entry system»					
KDL-AB...					
Matching label plate (See ACS catalogue):					
Type KSS 20 x 9 or KSS 10 x 8					
The right tool for cut-out production					
can be found in the chapter «Punching tools»					

Ebora Process Automation

Tel: +31 (0)26-3706830 · Fax: +31 (0)26-3706831 · info@ebora.nl · www.ebora.nl



KDL cable entry system

Cable entry system, type KDL 2/10

RoHS
compliant



-40 to 284 °F



Polyamide



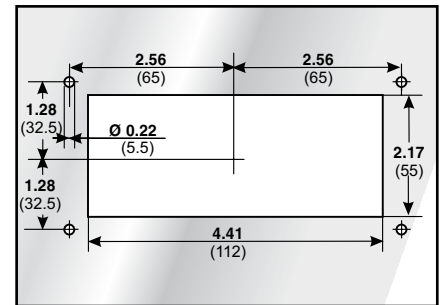
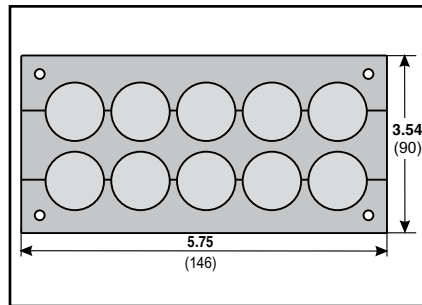
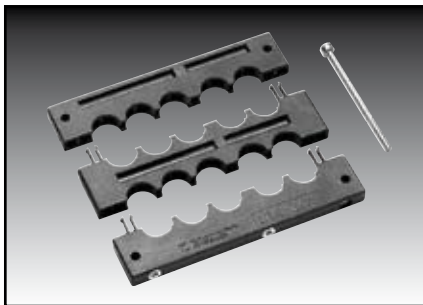
VO



IP 54
(with suitable grommets and cables)

The KDL 2/10 is a cable entry system for inserting pre-assembled cables. Larger cut-outs can be used to pass through up to 10 cables with large plugs—up to 20 cables for double grommets.

- Simple mounting of pre-assembled cables.
- Large cut-out
- Simple strain relief for the cables using cable ties
- Simple realization of EMC solution with discharge plate.



KDL 2/10

Type	Order no.	Color	No. of openings small / large	Installation height inch	Pack qty
------	-----------	-------	----------------------------------	-----------------------------	-------------

KDL 2/10	87171017	black	10 / -	0.39	1
KDL 2/10	87171057	gray	10 / -	0.39	1

Matching grommets

KDT/Z; BTK 17; KDT/ASI; SDT/Z

Matching EMC discharge plate in chapter «Accessories Cable entry system»

KDL-AB...

Matching label plate (See ACS catalogue):

Type KSS 20 x 9 or KSS 10 x 8

The right tool for cut-out production

can be found in the chapter «Punching tools»

Cable entry system, type KDL 3/15

RoHS
compliant



-40 to 284 °F



Polyamide



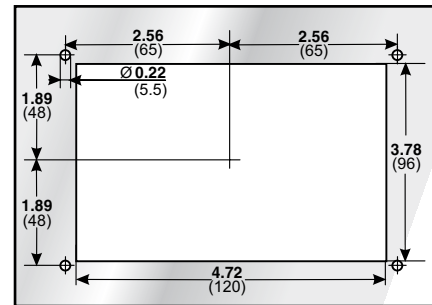
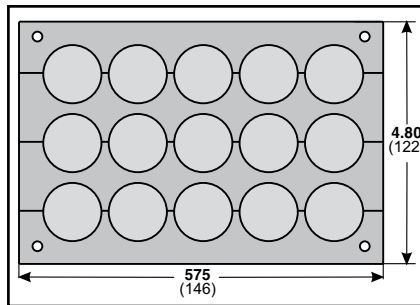
V0



IP 54
(with suitable grommets and cables)

The KDL 3/15 is a cable entry system for inserting pre-terminated cables. Larger cut-outs can be used to pass through up to 15 cables with large plugs—up to 30 cables for double grommets.

- Simple mounting of pre-assembled cables.
- Large cut-out
- Simple strain relief for the conduits using cable ties
- Simple realization of EMC solution with discharge plate.



KDL 3/15

Type	Order no.	Color	No. of openings small / large	Installation height inch	Pack qty
KDL 3/15	87171018	black	15 / -	0.39	1
Matching grommets KDT/Z; BTK 17; KDT/ASI; SDT/Z					
Matching EMC discharge plate in chapter «Accessories Cable entry system» KDL-AB...					
Matching label plate (See ACS catalogue): Type KSS 20 x 9 or KSS 10 x 8					
The right tool for cut-out production can be found in the chapter «Punching tools»					



KDL cable entry system

Cable entry connector housing, type KD/SG



-40 to 257 °F



Polycarbonate



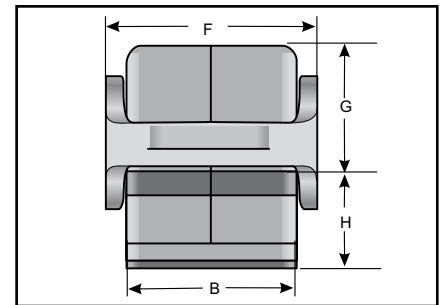
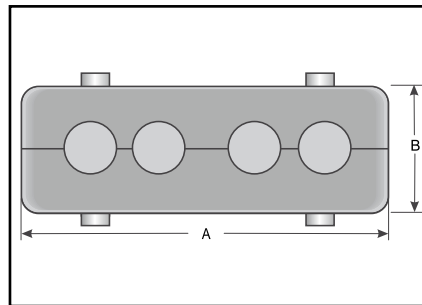
V0



IP 54
(with suitable grommets and cables)

The KD/SG connector housing is another option for inserting pre-terminated wiring into an enclosure. The KD/SG connector housing can be adapted using the mounting enclosure from Harting or Wieland. Mounting and/or unmounting of the KD/SG is simple and requires no tools.

- Simple mounting of pre-assembled cables.
- Simple strain relief for the conduits using cable ties
- No tools needed to separate connector casing from mounting enclosure



KD/SG...

Type	Order no.	Color	No. of openings small / large	Suitable for	A inch	B inch	G inch	Pack qty
------	-----------	-------	----------------------------------	-----------------	-----------	-----------	-----------	-------------

KD/SG-16/3	87171032	gray	3 / -	KD/AG-16H	3.70	1.69	1.10	1
------------	----------	------	-------	-----------	------	------	------	---

KD/SG-24/4	87171034	gray	4 / -	KD/AG-24...	4.72	1.69	1.10	1
------------	----------	------	-------	-------------	------	------	------	---

Matching grommets

KDT/Z; BTK 17; KDT/ASI; SDT/Z

Matching label plate (See ACS catalogue):

Type KSS 20 x 9 or KSS 10 x 8

Mounting enclosure type KD/AG

RoHS
compliant



-40 to 257 °F



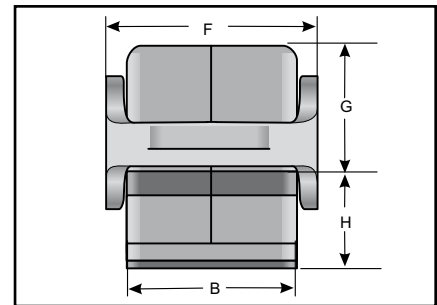
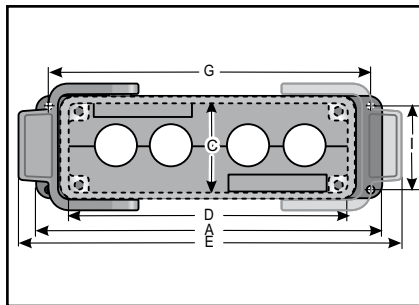
Polycarbonate/Steel
Aluminum die-casting/ Steel



IP 54

The mounting enclosure is able to accommodate the split connector housing, which allows you to easily introduce pre-assembled cables into the control cabinet. Version H in aluminum die-casting with steel catches.

- Simple mounting of pre-assembled cables.
- Fits standard cut-outs from Harting and Wieland
- No tools needed to separate connector casing from mounting enclosure



KD/AG...

Type	Order no.	Color	Suitable for	A inch	B inch	C inch	D inch	E inch	F inch	G inch	H inch	I inch	K inch	Pack qty
------	-----------	-------	--------------	-----------	-----------	-----------	-----------	-----------	-----------	-----------	-----------	-----------	-----------	----------

KD/AG-16H *	87191132	gray	KD/SG-16/3	4.45	1.73	1.42	3.39	5.39	2.17	4.06	1.06	1.26	0.18	1
KD/AG-24H	87191134	gray	KD/SG-24/4	5.51	1.73	1.42	4.41	6.10	2.17	5.12	1.06	1.26	0.18	1
KD/AG-24	87171144	gray	KD/SG-24/4	5.51	1.73	1.42	4.41	6.10	2.17	5.12	1.06	1.26	0.18	1

* Reduction of cut-out from 24-pole connector to 16-pole connector is possible through the AP 24/16 adapter plate.

The right tool for cut-out production can be found in the chapter «Punching tools»



KDL cable entry system

Cable entry grommets, type KDT/Z (standard)

RoHS
compliant



-40 to 176 °F



Thermoplastic rubber



HB

The cable entry grommet KDT/Z allows the fitting of cables from 0.12 - 1.14 inch in size in the cable entry system KDL. Strain relief can be provided quickly and easily for cables from a diameter of 0.39 inch using cable ties.



KDT/Z...

Type	Order no.	Color	for Ø inch	for opening small / large	No. Openings	Suitable for conduit	Pack qty
Grommet, small							
KDT/Z 03	87171212	black	0.12 - 0.16	● / -	1		10
KDT/Z 04	87171214	black	0.16 - 0.20	● / -	1		10
KDT/Z 05	87171216	black	0.20 - 0.24	● / -	1		10
KDT/Z 06	87171218	black	0.24 - 0.28	● / -	1		10
KDT/Z 07	87171220	black	0.28 - 0.31	● / -	1		10
KDT/Z 08	87171222	black	0.31 - 0.35	● / -	1		10
KDT/Z 09	87171224	black	0.35 - 0.39	● / -	1		10
KDT/Z 10	87171226	black	0.39 - 0.43	● / -	1		10
KDT/Z 11	87171228	black	0.43 - 0.47	● / -	1		10
KDT/Z 12	87171230	black	0.47 - 0.51	● / -	1		10
KDT/Z 13	87171232	black	0.51 - 0.55	● / -	1		10
KDT/Z 14	87171234	black	0.55 - 0.59	● / -	1		10
KDT/Z 15	87171236	black	0.59 - 0.63	● / -	1		10
Grommet, large							
KDT/Z 16	87171412	black	0.63 - 0.67	- / ●	1		10
KDT/Z 17	87171414	black	0.67 - 0.71	- / ●	1		10
KDT/Z 18	87171416	black	0.71 - 0.75	- / ●	1		10
KDT/Z 19	87171418	black	0.75 - 0.79	- / ●	1		10
KDT/Z 20	87171420	black	0.79 - 0.83	- / ●	1		10
KDT/Z 21	87171422	black	0.83 - 0.87	- / ●	1		10
KDT/Z 22	87171424	black	0.87 - 0.91	- / ●	1		10
KDT/Z 23	87171426	black	0.91 - 0.94	- / ●	1		10
KDT/Z 24	87171428	black	0.94 - 0.98	- / ●	1		10
KDT/Z 25	87171430	black	0.98 - 1.02	- / ●	1		10
KDT/Z 26	87171432	black	1.02 - 1.06	- / ●	1		10
KDT/Z 27	87171434	black	1.06 - 1.10	- / ●	1		10
KDT/Z 28	87171436	black	1.10 - 1.14	- / ●	1		10

Ebora Process Automation

Tel: +31 (0)26-3706830 · Fax: +31 (0)26-3706831 · info@ebora.nl · www.ebora.nl



Cable entry grommets, type KDT/Z-L (paint spraying sector)



-40 to 176 °F



Thermoplastic rubber

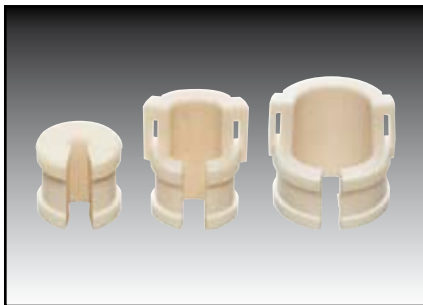


HB



Free of LABS substances

The KDT/Z-L is a cable insertion grommet for wires from 0.12 to 1.14 inch. The grommet was specially conceived for use in the paint spraying sector. The material contains no paint-wetting impairment substances. Strain relief can be provided quickly and easily for cables from a diameter of 0.39 inch using cable ties.



KDT/Z-L...

Type	Order no.	Color	for Ø inch	for opening small / large	No. Openings	Suitable for conduit	Pack qty
Grommet, small							
KDT/Z-L 03	87173212	white	0.12 - 0.16	● / -	1		10
KDT/Z-L 04	87173214	white	0.16 - 0.20	● / -	1		10
KDT/Z-L 05	87173216	white	0.20 - 0.24	● / -	1		10
KDT/Z-L 06	87173218	white	0.24 - 0.28	● / -	1		10
KDT/Z-L 07	87173220	white	0.28 - 0.31	● / -	1		10
KDT/Z-L 08	87173222	white	0.31 - 0.35	● / -	1		10
KDT/Z-L 09	87173224	white	0.35 - 0.39	● / -	1		10
KDT/Z-L 10	87173226	white	0.39 - 0.43	● / -	1		10
KDT/Z-L 11	87173228	white	0.43 - 0.47	● / -	1		10
KDT/Z-L 12	87173230	white	0.47 - 0.51	● / -	1		10
KDT/Z-L 13	87173232	white	0.51 - 0.55	● / -	1		10
KDT/Z-L 14	87173234	white	0.55 - 0.59	● / -	1		10
KDT/Z-L 15	87173236	white	0.59 - 0.63	● / -	1		10
Grommet, large							
KDT/Z-L 16	87173412	white	0.63 - 0.67	- / ●	1		10
KDT/Z-L 17	87173414	white	0.67 - 0.71	- / ●	1		10
KDT/Z-L 18	87173416	white	0.71 - 0.75	- / ●	1		10
KDT/Z-L 19	87173418	white	0.75 - 0.79	- / ●	1		10
KDT/Z-L 20	87173420	white	0.79 - 0.83	- / ●	1		10
KDT/Z-L 21	87173422	white	0.83 - 0.87	- / ●	1		10
KDT/Z-L 22	87173424	white	0.87 - 0.91	- / ●	1		10
KDT/Z-L 23	87173426	white	0.91 - 0.94	- / ●	1		10
KDT/Z-L 24	87173428	white	0.94 - 0.98	- / ●	1		10
KDT/Z-L 25	87173430	white	0.98 - 1.02	- / ●	1		10
KDT/Z-L 26	87173432	white	1.02 - 1.06	- / ●	1		10
KDT/Z-L 27	87173434	white	1.06 - 1.10	- / ●	1		10
KDT/Z-L 28	87173436	white	1.10 - 1.14	- / ●	1		10

Cable entry grommets, type KDT/Z-L (paint spraying sector)

RoHS
compliant

Type	Order no.	Color	for Ø inch	for opening small / large	No. Openings	Suitable for conduit	Pack qty
Dummy grommet							
BTK-L 17 (dummy grommet)	87173210	white		● / -	0		10
BTG-L 32 (dummy grommet)	87173410	white		- / ●	0		10
Adapter grommet							
ATG (adapter grommet)	87173610	white		- / ●	1		10
Cable protection conduit/grommet							
SDT/Z-L 07	87174210	white		● / -	1	EW-M10/P7	10
SDT/Z-L 09	87174212	white		● / -	1	EW-M12/P9	10
SDT/Z-L 11	87174214	white		● / -	1	EW-M16/P11	10
SDT/Z-L 16	87174216	white		- / ●	1	EW-M20/P16	10
SDT/Z-L 21	87174218	white		- / ●	1	EW-M25/P21	10
SDT/Z-EWT-L 10	87174232	white		● / -	1	EWT-xx-10	10
SDT/Z-EWT-L 14	87174236	white		- / ●	1	EWT-xx-14	10
SDT/Z-EWT-L 20	87174240	white		- / ●	1	EWT-xx-20	10

xx = PA or PP

Grommets match: KDL 16; KDL 24; KDL 2/10; KDL 3/15; KD/SG



Cable entry grommets, type KDT/Z-V0 (fire classification)

RoHS
compliant



-40 to 176 °F

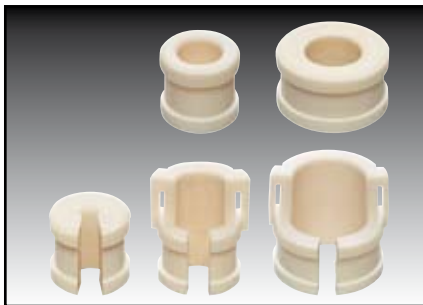


Thermoplastic rubber



VO

The cable entry grommet KDT/Z-V0 allows the fitting of cables from 0.12 - 1.14 inch in size in the cable entry system KDL. These cable entry grommets are self-extinguishing (VO) based on UL 94. Strain relief can be provided quickly and easily for cables from a diameter of 0.39 inch using cable ties.



KDT/Z-V0...

Type	Order no.	Color	for Ø inch	for opening small / large	No. Opening	Pack qty
Grommet, small						
KDT/Z-V0 03	87171512	white	0.12 - 0.16	● / -	1	10
KDT/Z-V0 04	87171514	white	0.16 - 0.20	● / -	1	10
KDT/Z-V0 05	87171516	white	0.20 - 0.24	● / -	1	10
KDT/Z-V0 06	87171518	white	0.24 - 0.28	● / -	1	10
KDT/Z-V0 07	87171520	white	0.28 - 0.31	● / -	1	10
KDT/Z-V0 08	87171522	white	0.31 - 0.35	● / -	1	10
KDT/Z-V0 09	87171524	white	0.35 - 0.39	● / -	1	10
KDT/Z-V0 10	87171526	white	0.39 - 0.43	● / -	1	10
KDT/Z-V0 11	87171528	white	0.43 - 0.47	● / -	1	10
KDT/Z-V0 12	87171530	white	0.47 - 0.51	● / -	1	10
KDT/Z-V0 13	87171532	white	0.51 - 0.55	● / -	1	10
KDT/Z-V0 14	87171534	white	0.55 - 0.59	● / -	1	10
KDT/Z-V0 15	87171536	white	0.59 - 0.63	● / -	1	10
Grommet, large						
KDT/Z-V0 16	87171712	white	0.63 - 0.67	- / ●	1	10
KDT/Z-V0 17	87171714	white	0.67 - 0.71	- / ●	1	10
KDT/Z-V0 18	87171716	white	0.71 - 0.75	- / ●	1	10
KDT/Z-V0 19	87171718	white	0.75 - 0.79	- / ●	1	10
KDT/Z-V0 20	87171720	white	0.79 - 0.83	- / ●	1	10
KDT/Z-V0 21	87171722	white	0.83 - 0.87	- / ●	1	10
KDT/Z-V0 22	87171724	white	0.87 - 0.91	- / ●	1	10
KDT/Z-V0 23	87171726	white	0.91 - 0.94	- / ●	1	10
KDT/Z-V0 24	87171728	white	0.94 - 0.98	- / ●	1	10
KDT/Z-V0 25	87171730	white	0.98 - 1.02	- / ●	1	10
KDT/Z-V0 26	87171732	white	1.02 - 1.06	- / ●	1	10
KDT/Z-V0 27	87171734	white	1.06 - 1.10	- / ●	1	10
KDT/Z-V0 28	87171736	white	1.10 - 1.14	- / ●	1	10

Cable entry grommets, type KDT/Z-V0 (fire classification)

RoHS
compliant

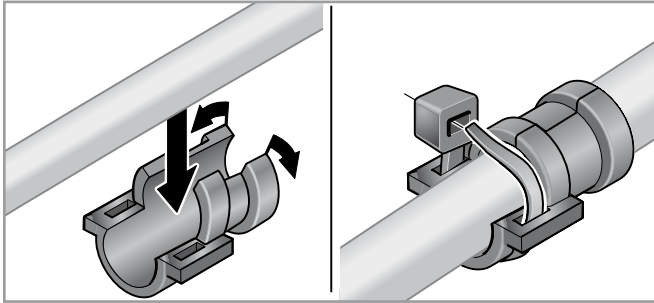
Type	Order no.	Color	for Ø inch	for opening small / large	No. Opening	Pack qty
Dummy grommet						
BTK-V0 17 (dummy grommet)	87171510	white		● / -	0	10
BTG-V0 32 (dummy grommet)	87171710	white		- / ●	0	10

Grommets match: KDL 16; KDL 24; KDL 2/10; KDL 3/15; KD/SG

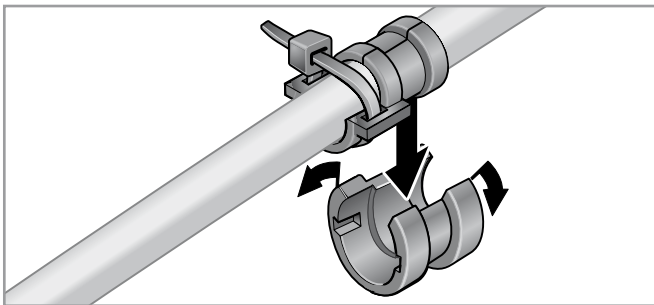


KDL cable entry system

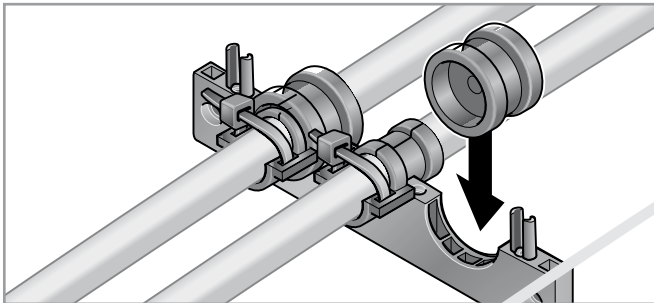
Assembly



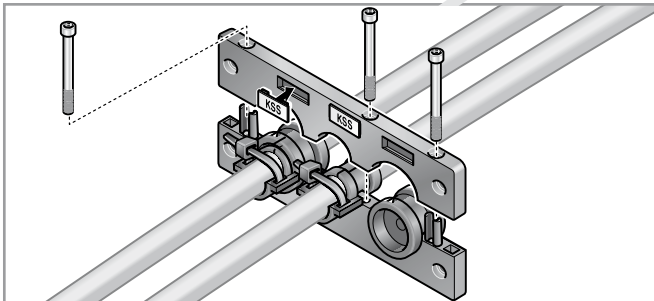
Lay cable into appropriate grommet and provide strain relief where necessary (from 0.39 inch diameter) using cable ties.



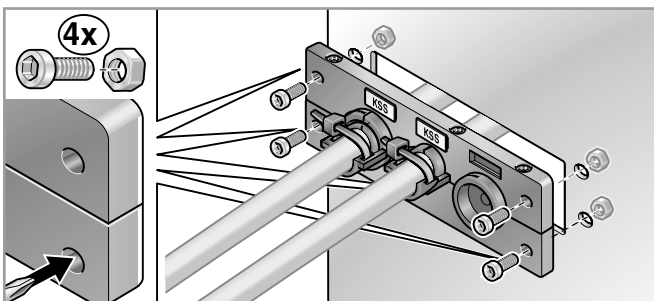
Where required, install small sleeves into the adapter grommet.



Insert grommet completely. Fill in empty spaces with dummy grommets.



Join upper and lower part of frame. Fasten rail with the side screws.



Position rail on cut-out and fasten.



KDL/EMV cable entry system





Advantages



Discharge sheath currents

The KDL-EMV is a cable entry system made of plastic with a metallized surface.

This plate can be used as a trouble-free way to discharge sheath currents from electromagnetic cable shielding.

The KDT/Z-EMV cable entry grommet uses a fitted metal braiding to achieve the connection between the cable shielding and the cable entry system.

An alternative opportunity to discharge sheath currents comes through an additional discharge plate that can be mounted onto the existing drilling pattern.



- ✓ Easy assembly
- ✓ Large cut-out
- ✓ Variable
- ✓ No additional parts required
- ✓ No extra mounting effort required

Overview

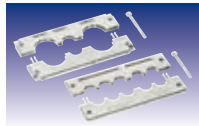
Page 48



Cable entry system Type KDL16/x-EMV

KDL metallized for cut-outs for 16-pole connectors e.g. Harting or Wieland.

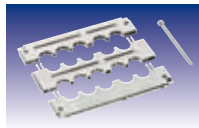
Page 49



Cable entry system Type KDL24/x-EMV

KDL metallized for cut-outs for 24-pole connectors e.g. Harting or Wieland.

Page 50



Cable entry system Type KDL 2/10-EMV

Cable entry system metallized for 10 cable entry grommets.

Page 51



Cable entry grommet Type KDT/Z-EMV

KDT with metal mesh insert for cable insertion with simultaneous discharge of sheath currents.





KDL/EMV cable entry system

Selection table

		Cable entry grommets	
		Type KDT/Z-EMV	
		Cable diameter	Cable diameter
		0.12 - 0.63 inch (3 - 16 mm)	0.63 - 1.14 inch (16 - 29 mm)
Cable entry system	Order no.	Opening, small	Opening, large
KDL 16/2-EMV	87171020	0	2
KDL 16/4-EMV	87171022	4	0
KDL 24/3-EMV	87171024	1	2
KDL 24/5-EMV	87171026	5	0
KDL 2/10-EMV	87171027	10	0

Material data

Type	Material	Temperature		Fire classification UL 94	RoHS Compliant	Halogen-free	Phosphorous-free	Cadmium-free	Asbestos-free	Lead-free	Silicone-free
		Min.	Max.								
KDL 16/x-EMV	Polyamide with conductive coating	-40 °F	257 °F	V0	✓	✓	✓	✓	✓	✓	✓
KDL 24/x-EMV	Polyamide with conductive coating	-40 °F	257 °F	V0	✓	✓	✓	✓	✓	✓	✓
KDL 2/10-EMV	Polyamide with conductive coating	-40 °F	257 °F	V0	✓	✓	✓	✓	✓	✓	✓
KDT/Z-EMV	Thermoplastic rubber with conductive textile tape	-40 °F	176 °F	HB	✓	✓	✓	✓	✓	✓	✓

** = not certified



Cable entry system, type KDL 16/x-EMV RoHS compliant



-40 to 257 °F



Polyamide with conductive coating

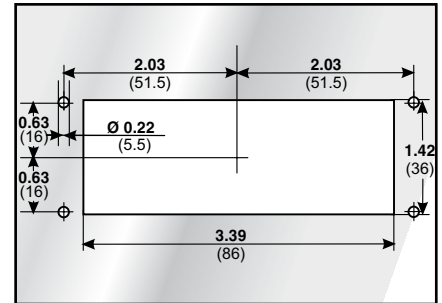
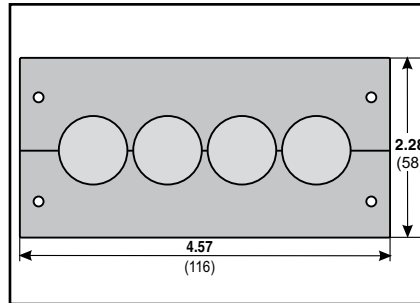


V0

The cable entry system KDL/EMV is based on the cable entry system KDL. A conductive surface allows cable sheath interference to be discharged onto the control cabinet simply and without additional aids.

Field-related interferences are discharged by the metallization.

Suitable for standard cut-out 16-pole connectors from Harting or Wieland, for example.



KDL 16...-EMV

Type	Order no.	Color	No. of openings small / large	Installation height inch	Pack qty
KDL 16/2-EMV	87171020	chrome	- / 2	0.39	1
KDL 16/4-EMV	87171022	chrome	4 / -	0.39	1
Replacement parts:					
Replacement seal KDL16-EMV	8717102100				1
Matching grommets					
KDT/Z-EMV; ATG-EMV; BTK 17; BTG 32					
Matching label plate (See ACS catalogue):					
Type KSS 20 x 9 or KSS 10 x 8					
The right tool for cut-out production can be found in the chapter «Punching tools»					

Cable entry system, type KDL 24/x-EMV

RoHS
compliant



-40 to 257 °F



Polyamide with conductive coating

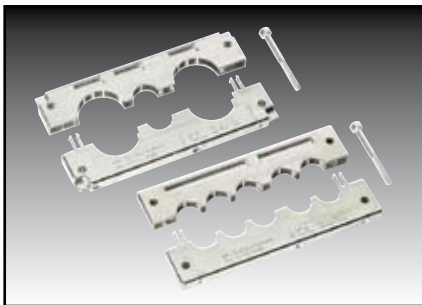


V0

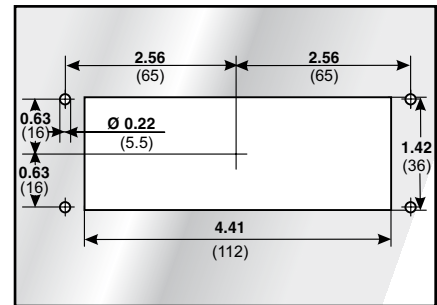
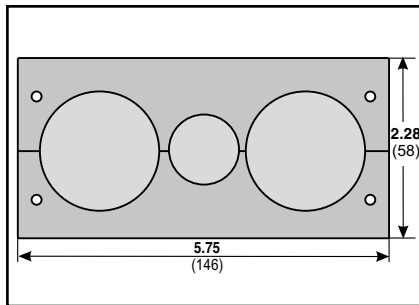
The cable entry system KDL/EMV is based on the cable entry system KDL. A conductive surface allows cable sheath interference to be discharged onto the control cabinet simply and without additional aids.

Field-related interferences are discharged by the metallization.

Suitable for standard cut-out 24-pole connectors from Harting or Wieland, for example.



KDL 24...-EMV



Type	Order no.	Color	No. of openings small / large	Installation height inch	Pack qty
------	-----------	-------	----------------------------------	-----------------------------	-------------

KDL 24/3-EMV	87171024	chrome	1 / 2	0.39	1
KDL 24/5-EMV	87171026	chrome	5 / -	0.39	1

Replacement parts:					
Replacement seal KDL24-EMV	8717102500				1

Matching grommets KDT/Z-EMV; ATG-EMV; BTK 17; BTG 32					
---	--	--	--	--	--

Matching label plate (See ACS catalogue): Type KSS 20 x 9 or KSS 10 x 8					
--	--	--	--	--	--

The right tool for cut-out production can be found in the chapter «Punching tools»					
---	--	--	--	--	--

Ebora Process Automation

Tel: +31 (0)26-3706830 · Fax: +31 (0)26-3706831 · info@ebora.nl · www.ebora.nl

Cable entry grommets, type KDT/Z-EMV

RoHS
compliant



-40 to 176 °F



Thermoplastic rubber
with conductive textile tape



HB

The cable entry grommet KDT/Z-EMV is a grommet adapted to the sheath diameter with a conductive textile tape to discharge interferences to the control cabinet.

Strain relief can be provided quickly and easily for cables from a diameter of 0.39 inch using cable ties.



KDT/Z-EMV...

Type	Order no.	Color	for sheath of Ø inch	for opening small / large	No. Openings	Pack qty
Grommet, small						
KDT/Z-EMV 03	87171812	black	0.12 - 0.16	● / -	1	10
KDT/Z-EMV 04	87171814	black	0.16 - 0.20	● / -	1	10
KDT/Z-EMV 05	87171816	black	0.20 - 0.24	● / -	1	10
KDT/Z-EMV 06	87171818	black	0.24 - 0.28	● / -	1	10
KDT/Z-EMV 07	87171820	black	0.28 - 0.31	● / -	1	10
KDT/Z-EMV 08	87171822	black	0.31 - 0.35	● / -	1	10
KDT/Z-EMV 09	87171824	black	0.35 - 0.39	● / -	1	10
KDT/Z-EMV 10	87171826	black	0.39 - 0.43	● / -	1	10
KDT/Z-EMV 11	87171828	black	0.43 - 0.47	● / -	1	10
KDT/Z-EMV 12	87171830	black	0.47 - 0.51	● / -	1	10
KDT/Z-EMV 13	87171832	black	0.51 - 0.55	● / -	1	10
KDT/Z-EMV 14	87171834	black	0.55 - 0.59	● / -	1	10
KDT/Z-EMV 15	87171836	black	0.59 - 0.63	● / -	1	10
Grommet, large						
KDT/Z-EMV 16	87172012	black	0.63 - 0.67	- / ●	1	10
KDT/Z-EMV 17	87172014	black	0.67 - 0.71	- / ●	1	10
KDT/Z-EMV 18	87172016	black	0.71 - 0.75	- / ●	1	10
KDT/Z-EMV 19	87172018	black	0.75 - 0.79	- / ●	1	10
KDT/Z-EMV 20	87172020	black	0.79 - 0.83	- / ●	1	10
KDT/Z-EMV 21	87172022	black	0.83 - 0.87	- / ●	1	10
KDT/Z-EMV 22	87172024	black	0.87 - 0.91	- / ●	1	10
KDT/Z-EMV 23	87172026	black	0.91 - 0.94	- / ●	1	10
KDT/Z-EMV 24	87172028	black	0.94 - 0.98	- / ●	1	10
KDT/Z-EMV 25	87172030	black	0.98 - 1.02	- / ●	1	10
KDT/Z-EMV 26	87172032	black	1.02 - 1.06	- / ●	1	10
KDT/Z-EMV 27	87172034	black	1.06 - 1.10	- / ●	1	10
KDT/Z-EMV 28	87172036	black	1.10 - 1.14	- / ●	1	10

Ebora Process Automation

Tel: +31 (0)26-3706830 · Fax: +31 (0)26-3706831 · info@ebora.nl · www.ebora.nl



Cable entry system KDL/S





Advantages



Custom cable insertion

The KDL/S is a custom cable entry system that can be manufactured to meet the customer's specifications.

The cut-out size for the cable entry system corresponds to the cut-out for 16-pole connectors.

Various cable entries can be created, e.g. multi-inserts, custom shapes or different combinations.



- ✓ Individual solution
- ✓ Easy assembly
- ✓ Large cut-out

Overview

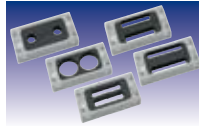
Page 60



Cable entry system Type KDL/S

Cable entry system for cut-outs for 16-pole connectors
e.g. Harting or Wieland.

Page 61



Cable entry grommet Type KDT/S

Custom cable entry grommets designed for KDL/S.





Ebora Process Automation

Tel: +31 (0)26-3706830 · Fax: +31 (0)26-3706831 · info@ebora.nl · www.ebora.nl

Material data

Type	Material	Temperature		Fire classification UL 94	RoHS Compliant	Approval for railroad use			Halogen-free	Phosphorous-free	Cadmium-free	Asbestos-free	Lead-free	Silicone-free
		Min.	Max.			DB	SNCF	BS						
KDL/S	Polyamide	-40 °F	257 °F	V0	✓	✓	✓ **	✓	✓	✓	✓	✓	✓	✓
KDT/S	Thermoplastic rubber	-40 °F	176 °F	HB	✓		✓	✓	✓	✓	✓	✓	✓	✓

** = not certified

Ebora Process Automation

Tel: +31 (0)26-3706830 · Fax: +31 (0)26-3706831 · info@ebora.nl · www.ebora.nl



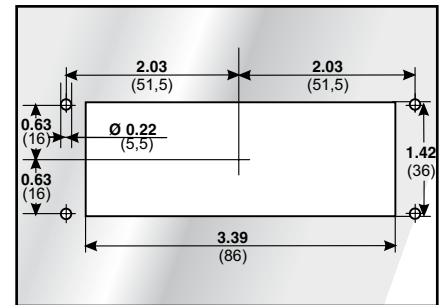
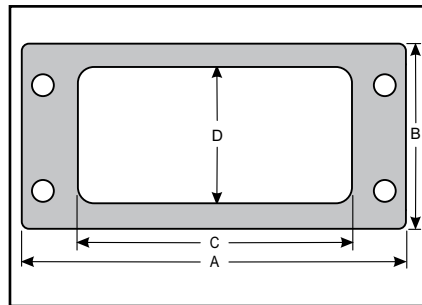
Cable entry system KDL/S

Cable entry system, type KDL/S RoHS compliant

- 40 to 257 °F
- Polyamide
- VO

The cable entry system type KDL/S is a custom plate that allows various kinds of cables to be inserted to meet the customer's desires and then for the opening to be closed off. The internal KDT/S grommet can be custom designed based on the customer's desires.

- Fits standard cut-outs for 16-pole connectors (e.g. Harting, Wieland and Rittal).
- Individual solutions



KDL/S 16

Type	Order no.	Color	A inch	B inch	C inch	D inch	Installation height inch	Pack qty
------	-----------	-------	-----------	-----------	-----------	-----------	-----------------------------	-------------

KDL/S 16	87173004	black	4.57	2.28	3.23	1.69	0.59	1
----------	----------	-------	------	------	------	------	------	---

Matching grommets
KDT/S

The right tool for cut-out production
can be found in the chapter «Punching tools»



Cable entry grommets, type KDT/S

RoHS
compliant



-40 to 176 °F



Thermoplastic rubber



HB

The cable entry grommets type KDT/S can be manufactured to meet the customer's specifications. They can provide solutions for the most varied of applications, e.g. insertion of cables in the most varied of shapes or sealing of openings for pass-through metal wiring that must be sealed off.

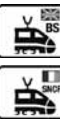
- Individual solutions



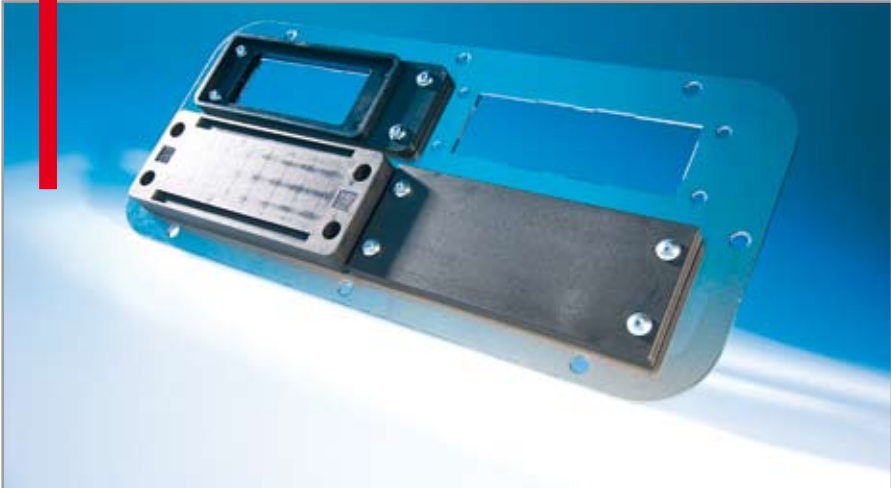
KDT/S

Type	Order no.	Color	No. of openings	for Ø inch	for ribbon cable inch	Version	Pack qty
KDT/S 2x15	87175444	black	2	0.59		two-part	1
KDT/S 2x35	87175440	black	2	1.38		two-part	1
KDT/S 56x13	87175442	black	2		2.20 x 0.51	two-part	1
KDT/S 56x13 B	87175448	black	2		2.20 x 0.51	one-piece	1
KDT/S 67x12 B	87175446	black	2		2.64 x 0.47	one-piece	1

Grommets match: KDL/S 16

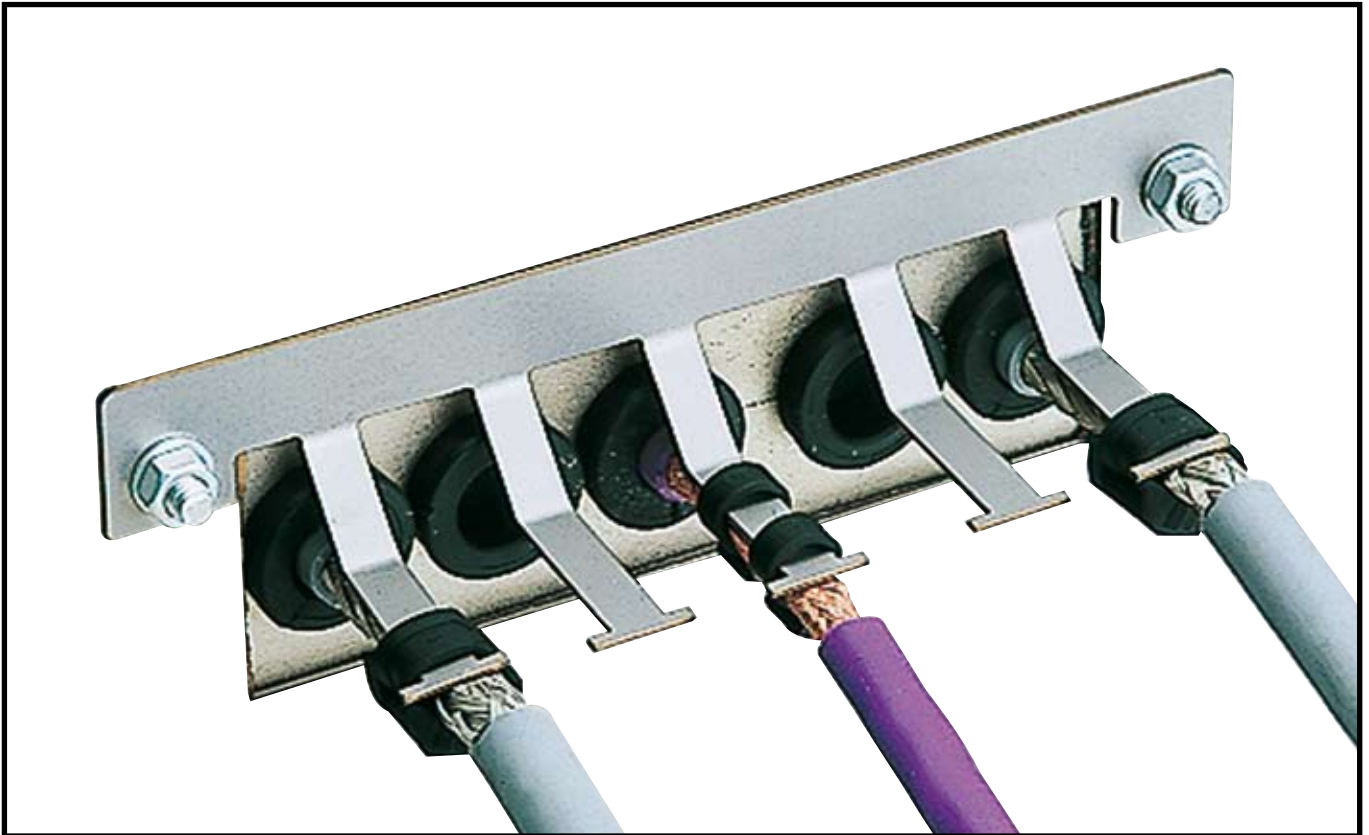


Cable entry systems accessories





Advantages



Accessories that you really need

Among the accessories are blanking plates to seal off various cut-outs in different manners. Adapter plates for reducing cut-out sizes and discharge plates for discharging sheath currents are also found here.



- ✓ System integrated
- ✓ Easy assembly
- ✓ Cost-effective

Overview

Page 68



Blanking plate Type BPV

Blanking plates for sealing cut-outs sized for 16 and 24-pole connectors e.g. Harting or Wieland.

Page 69



Blanking plate Type BP

Reinforced blanking plates for sealing cut-outs sized for 16 and 24-pole connectors e.g. Harting or Wieland.

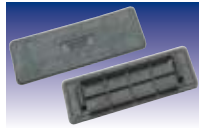
Page 70



Blanking plate Type BP/N

Polyamide blanking plates for sealing cut-outs for 24-pole connectors, e.g. Harting or Wieland. Can be screwed and snapped in.

Page 70



Blanking plate Type BP/H

Blanking plate, snap-in, made of thermoplastic elastomer. For sealing cut-outs for 24-pole connectors e.g. Harting or Wieland.

Page 71



Adapter plate Type AP

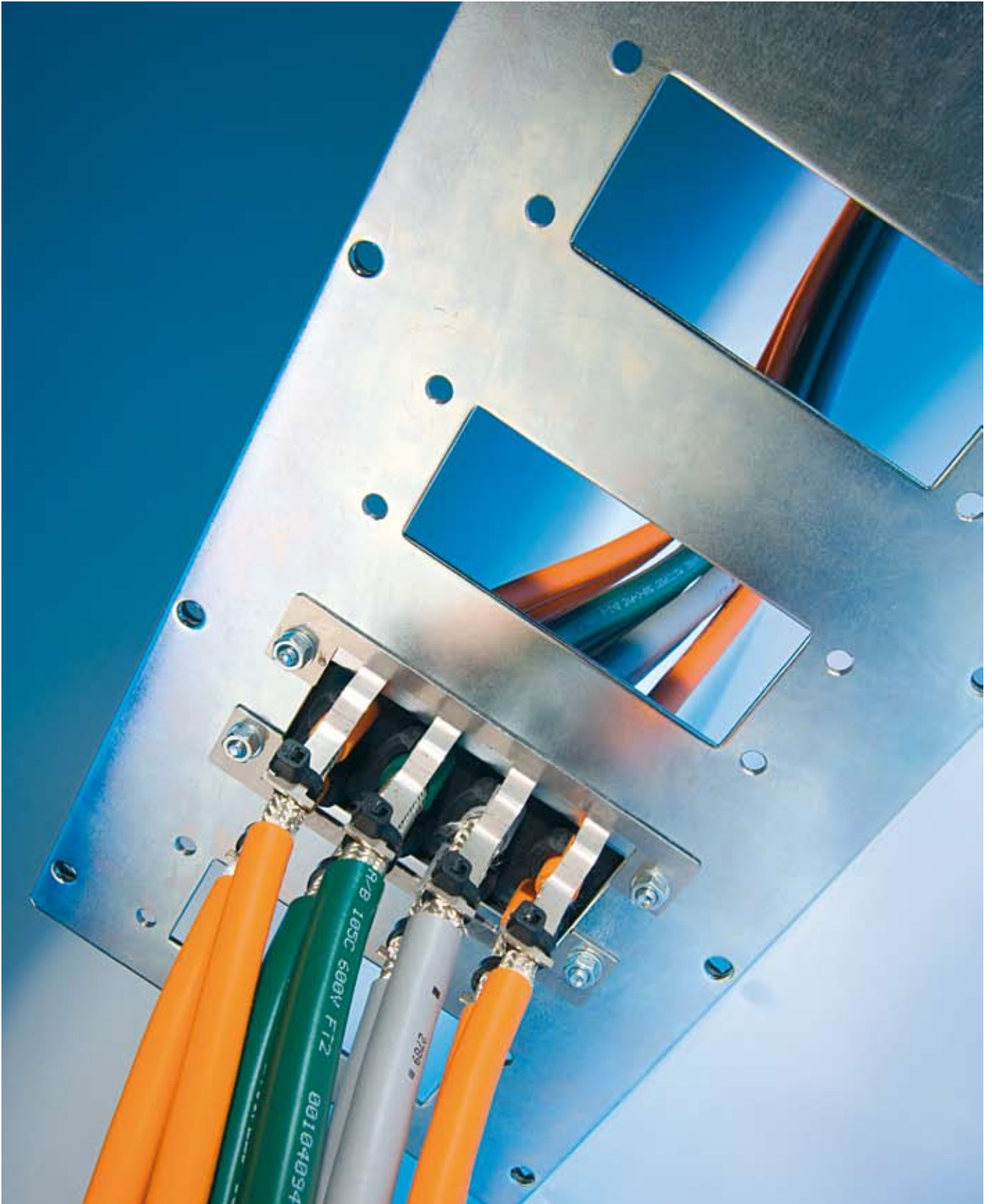
Reduces a 24-pole connector cut-out into a 16-pole connector cut-out.

Page 72



Discharge plate Type KDL-AB

For discharging sheath currents (EMC)



Ebora Process Automation

Tel: +31 (0)26-3706830 · Fax: +31 (0)26-3706831 · info@ebora.nl · www.ebora.nl

Material data

Type	Material	Temperature		Fire classification UL 94	RoHS Compliant	IP protection class	Approvals				Approval for railroad use			Halogen-free	Phosphorous-free	Cadmium-free	Asbestos-free	Lead-free	Silicone-free
		Min.	Max.				UR	CSA	VDE	Ex	DB	SNCF	BS						
BPV	Polyamide	-40 °F	257 °F	V0	✓	IP65					✓	✓	✓	✓	✓	✓	✓	✓	✓
BP (reinforced)	Polyamide	-40 °F	257 °F	HB	✓	IP54	✓				✓	✓	✓	✓	✓	✓	✓	✓	✓
BP/N	Polyamide, TPU	-40 °F	257 °F	V0	✓	IP65	✓				✓	✓	✓	✓	✓	✓	✓	✓	✓
BP/H	TPE	-40 °F	140 °F	HB	✓	IP42	✓				✓	✓	✓	✓	✓	✓	✓	✓	✓
AP	Polyamide	-40 °F	257 °F	V0	✓	IP54	✓				✓	✓	✓	✓	✓	✓	✓	✓	✓
KDL-AB KDL/N-AB	Stainless steel 1.1401 (V2A)				✓								✓	✓	✓	✓	✓	✓	✓





** = not certified

Ebora Process Automation

Tel: +31 (0)26-3706830 · Fax: +31 (0)26-3706831 · info@ebora.nl · www.ebora.nl

Blanking plates, type BP (reinforced)

RoHS compliant

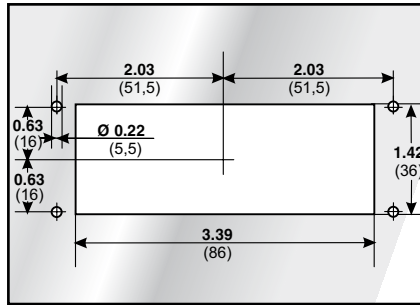
-  -40 to 257 °F
-  Polyamide
-  V0
-  IP 54

The BP blanking plates are suited for sealing cut-outs for 16- or 24-pole connectors. Unused cut-outs in areas like control cabinets or a KDP 24 AP/xx adapter plate can be closed off simply with the blanking plate.

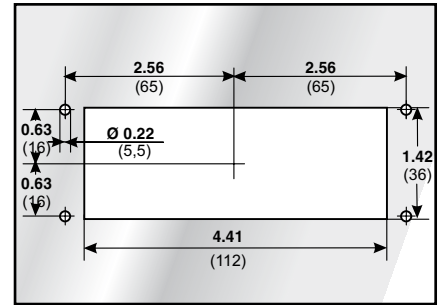
- Integrated seal



BP



BP16 cut out



BP24 cut out

Type	Order no.	Color	Dimension inch L x W x H	Pack qty
BP 16	87171620	black	4.57 x 2.28 x 0.31	10
BP 24	87171622	black	5.75 x 2.28 x 0.31	10



Cable entry systems/accessories

Blanking plate Type BP/N and BP/H

RoHS
compliant



BP/N: -40 to 257 °F
BP/H: -40 to 140 °F



BP/N: Polyamide, TPU
BP/H: TPE



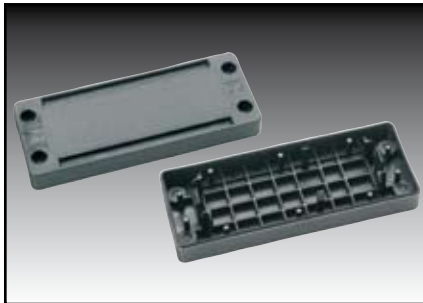
BP/N: V0
BP/H: HB



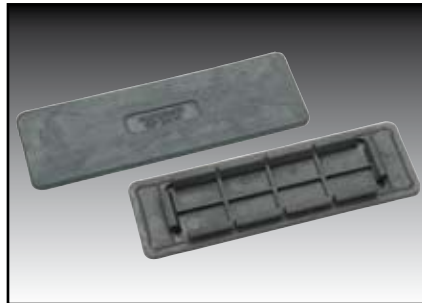
BP/N: IP 65
BP/H: IP 42

The BP/N and BP/H blanking plates are suitable for closing cut-outs for 24-pole connectors. Unused cut-outs in areas like control cabinets or a KDP 24 AP/xx adapter plate can be closed off simply with the blanking plate.

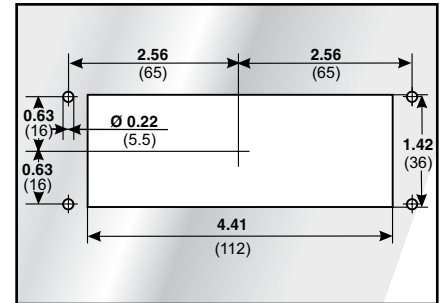
- Integrated seal
- Snap-in action at plate thicknesses from 0.06 to 0.08 inch
- Alternative to screwing on (BP/N only)



BP/N



BP/H



Type	Order no.	Color	Dimension inch L x W x H	Pack qty
------	-----------	-------	--------------------------------	-------------

BP/N 24	87171624	black	5.75 x 2.28 x 0.61	1
BP/H 24 *	87171626	black	5.75 x 1.89 x 0.18	1

* not DB approved

Adapter plate type AP



-40 to 257 °F

Polyamide

V0

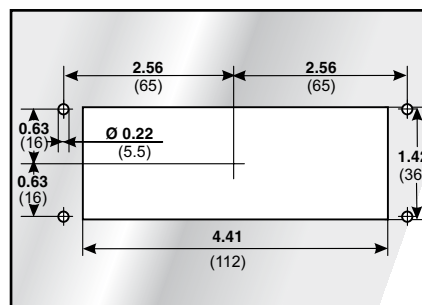
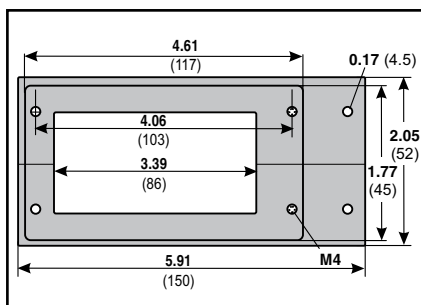
IP 54

The AP adapter plate is suited for reduction of cut-outs for connectors from 24-pole to 16-pole dimensions. The KD/AG16 mount casing or the BPV 16 blanking plate can be mounted into the adapter plate.

- Integrated seal



AP 24/16



Type	Order no.	Color	Suitable for	Installation height inch	Pack qty
AP 24/16	87171660	black	only type KD/AG 16 and BPV 16	0.39	10





Cable entry systems/accessories

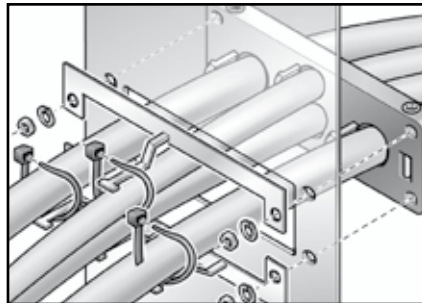
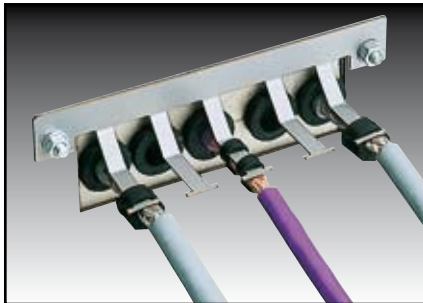
Discharge plate type KDL-AB and KDL/N-AB



Stainless steel 1.1401 (V2A)

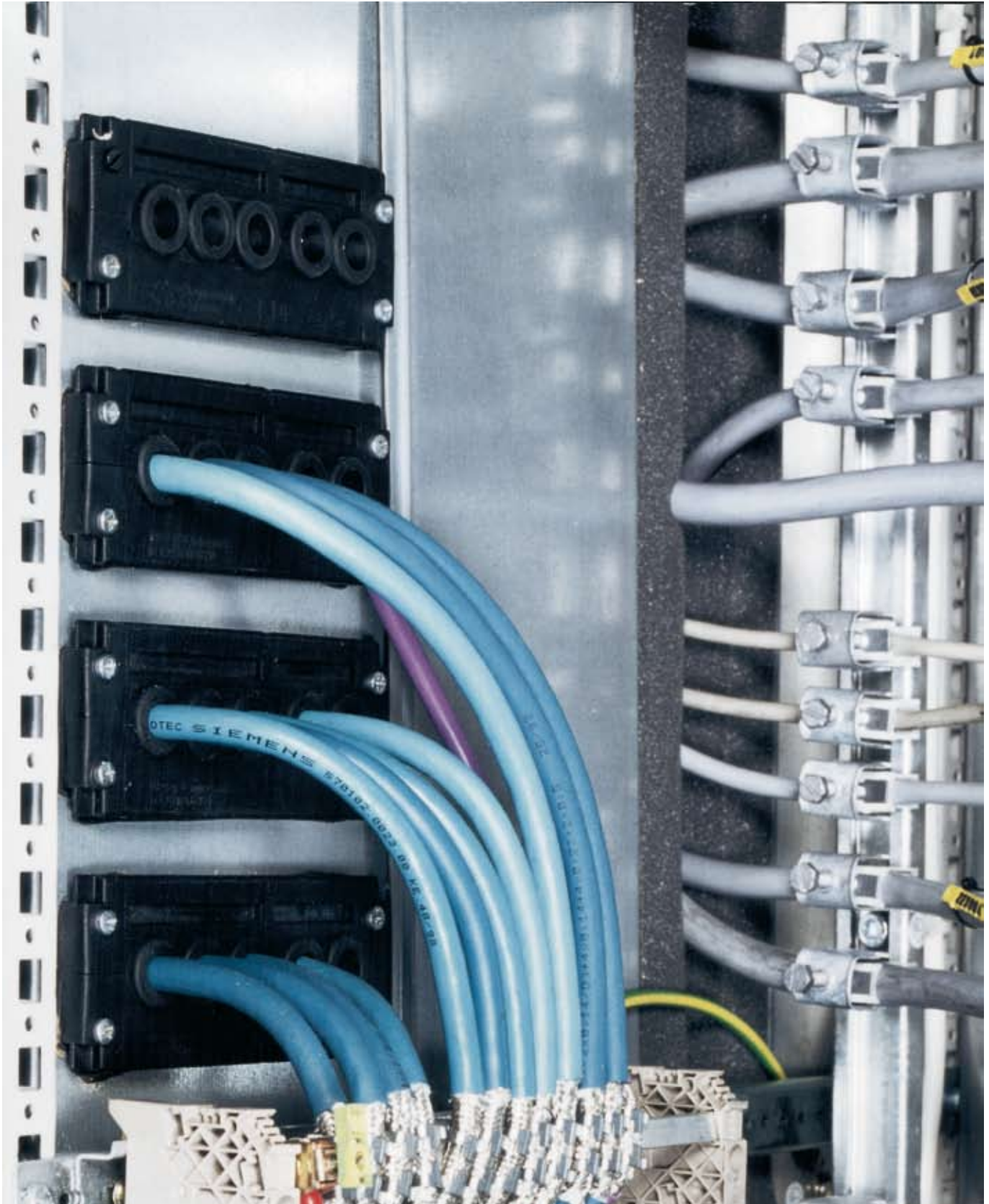
The KDL and KDL/E discharge plates are suited for discharging interference which may occur on cable sheaths.

The discharge plate should be installed on the inside of the control cabinet, directly at the fixing points of the KDL or KDL/E cable entry system.



KDL/AB...

Type	Order no.	No. Discharges	Suitable for	Pack qty
KDL/AB 16/2-EMV	87252410	2	KDL 16/2; KDL/E 16/2	1
KDL/AB 16/4-EMV	87252412	4	KDL 16/4	1
KDL/AB 24/3-EMV	87252414	3	KDL 24/3	1
KDL/AB 24/5-EMV	87252416	5	KDL 24/5; KDL 2/10; KDL 3/15	1
KDL/N-AB 16/5-EMV OT	87252420	3	KDL/E 16/5 upper part	1
KDL/N-AB 16/5-EMV UT	87252422	2	KDL/E 16/5 lower part	1
KDL/N-AB 16/8-EMV	87252424	4	KDL/E 16/8 upper and lower part	1
KDL/N-AB 24/4-EMV OT	87252426	3	KDL/E 24/4 top side	1
KDL/N-AB 24/4-EMV UT	87252428	1	KDL/E 24/4 bottom side	1
KDL/N-AB 24/7-EMV OT	87252430	4	KDL/E 24/7 top side	1
KDL/N-AB 24/7-EMV UT	87252432	3	KDL/E 24/7 bottom side	1
KDL/N-AB 24/10-EMV OT	87252434	5	KDL/E 24/10 top side	1
KDL/N-AB 24/10-EMV UT	87252436	5	KDL/E 24/10 bottom side	1



Ebora Process Automation

Tel: +31 (0)26-3706830 · Fax: +31 (0)26-3706831 · info@ebora.nl · www.ebora.nl