

With threaded connection according to DIN EN ISO 228-1

USE:

Sight glass flanges with threaded connections are suitable for pipelines, boilers, tanks and apparatus of all kinds. They can be used wherever visual inspections of filling or flow are required. They are equally suitable for liquids and gases. They are also particularly recommended for special designs in various fields of application.

INSTALLATION INSTRUCTIONS:

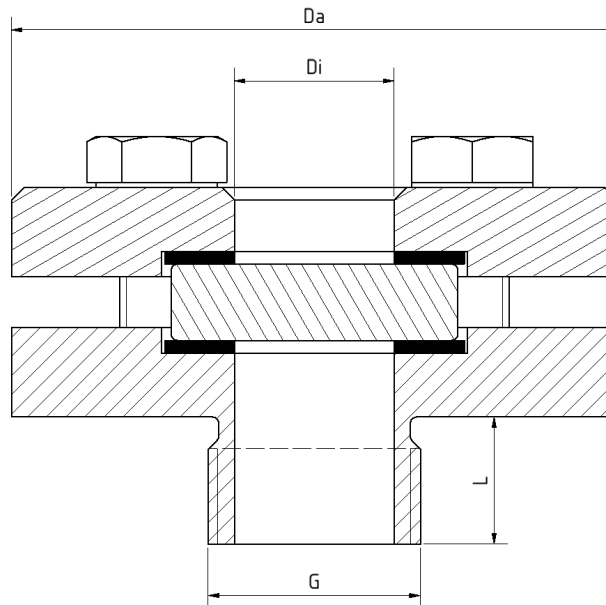
The threaded connection must be sealed with a suitable sealant in order to achieve the specified pressure rating. The connection thread is not designed to be self-sealing!

MATERIALS	
Base flange:	1.4571; 1.4404
Glass:	Borosilicate glass (DIN 7080 or similar)
Gasket: ¹	PTFE; FKM; NBR; C4400; Silicone; EPDM; Graphite
Screws:	A4-70 / A2-70
Special materials on request	

1) See „INFO gasket“ leaflet

OPERATING CONDITIONS		
Temperature: (depending on glass and gasket)	≤ 280°C	Borosilicate glass (DIN 7080 or similar)
Pressure:	≤ 16 bar(g) up to 160 bar(g)	
Higher pressures possible on request		
Low temperature application as well as higher temperatures/pressures on request		

DRAWING:



PN	G	Da [mm]	Di [mm]	L [mm]	Weight [kg]
16	½"	70	15	20	0,7
	1"	95	25	20	1,4
	1½"	110	40	20	2,1
	2"	110	40	20	2,1
40	½"	70	15	20	0,7
	1"	like PN 63			
	1½"	110	40	20	2,1
	2"	110	40	20	2,1
63	½"	95	15	20	1,3
	1"	95	25	20	1,5
	1½"	like PN 100			
	2"	like PN 100			
100	½"	70	15	20	0,7
	1"	95	25	20	1,5
	1½"	110	40	20	2,2
	2"	110	40	20	2,2
160	½"	70	15	20	0,7
	1"	95	25	20	1,7
	1½"	110	40	20	2,6
	2"	110	40	20	2,6
other sizes and pressure ratings on request					
Assembly with hook spanner like DIN 11851					

PRODUCT CODE:

Example explaining the code composition.

11-392-2-1-2-1-4-0

GROUP	TYPE	G	PN	BASE FLANGE ¹	GLASS	GASKET	VARIANT
11	392	1) ½"	1) 16	1) 1.4404	1) Borosilicate glass ²	1) PTFE	0) Standard
		2) 1"	2) 40	2) 1.4571	4) Borosilicate glass ³ + PTFE-wiper SGW	2) FKM	
		3) 1½"	3) 63	3) Special	5) Borosilicate glass ³ + Silicone-wiper SGW	3) NBR	
		4) 2"	4) 100			4) C4400	
		5) Special	5) 160			5) Silicone	
		6) Special	6) Special			6) EPDM	
						7) Graphite	
						8) Special	

1) Cover flange according to quotation/order confirmation.

2) According to DIN 7080

3) Similar to DIN 7080



Unless otherwise specified, the highlighted work standard is delivered.

EXAMPLE:

11-392-2-1-2-1-4-0 equivalent to:

ACI Type 392

Thread G 1"

PN 16

Base flange made of 1.4571

Cover flange made of 1.4571

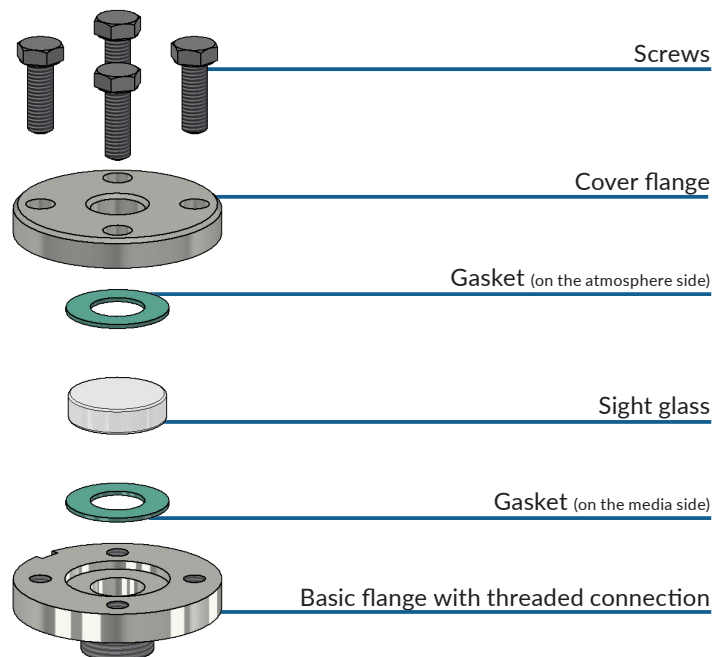
Borosilicate glass (DIN 7080 or similar)

Gasket C4400

Standard version

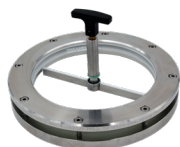
- other equipment optional

CONSTRUCTION:



For aggressive media or steam, mica discs should be used to protect the glasses.

OPTIONAL EQUIPMENT



Wiper SGW

with PTFE- or silicone wiper blade



LED lights

for Ex- and Non-Ex areas



Mica discs

up to 300°C with borosilicate glass
DIN 7080¹

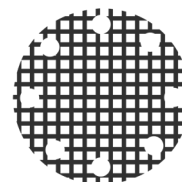


**FEP-protective screen or
FEP-coating**
for higher pH values

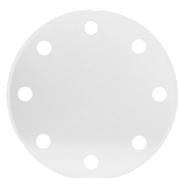


Metal fused safety sight glass

for chemical use



Grid impact protection window²



PLEXIGLAS®-impact protection

1) From nominal pressure PN 100 & in nominal size 1" up to 300°C
From nominal pressure PN 100, nominal size 1", 1½" & 2" up to 300°C
2) Punching on customer request