



With welding ends according to
DIN EN 1092-1 type 11

USE:

Round sight glasses are used for observation and illumination of the inside of closed vessels (boilers, tanks, silos, etc.) or pipelines for **vacuum applications**. Sight glass fittings type 390 are round flanged fittings with welding ends according to DIN EN 1092-1 for welding, each completed with a sight glass plate inserted between the gaskets and screwed firmly.

INSTALLATION INSTRUCTIONS:

After welding the flange on the pressure vessel, the sealing surface must be checked for deformations! Reworking may be required! Observe the listed torque values for remounting the cover flange! The pressure rating does not consider the base flange

OPERATING CONDITIONS		
Temperature: (depending on glass and gasket)	≤ 200°C	Borosilicate glass (DIN 7080 or similar)
	> 200°C	on request
Pressure:	≤ -0,9 ¹ bar(g) up to 16 bar(g)	
Low temperature application as well as higher temperatures/pressures on request		

1) Depending on environment variables

MATERIALS	
Base flange:	1.4571; 1.4404; 1.4539; 1.4435; 1.4541; 1.4301/7; 1.4876; 1.4828; 2.4602; 2.4610
Glass:	Borosilicate glass (DIN 7080 or similar)
Gasket:²	PTFE; FKM; NBR; Silicone; EPDM
Screws:	A4-70 / A2-70
Special materials on request	

2) See „INFO-gasket“ leaflet

ATTENTION!

The pressure-temperature limits according to DIN EN 1092-1 apply!

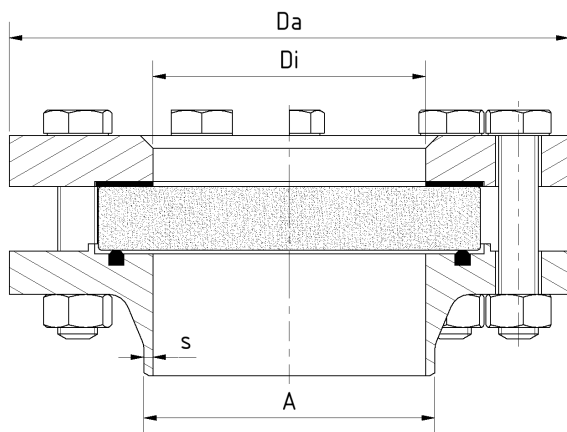
Our tool of the same name is available on our website for this purpose. (www.ACI24.com, in the category Service, in the subitem Tools)



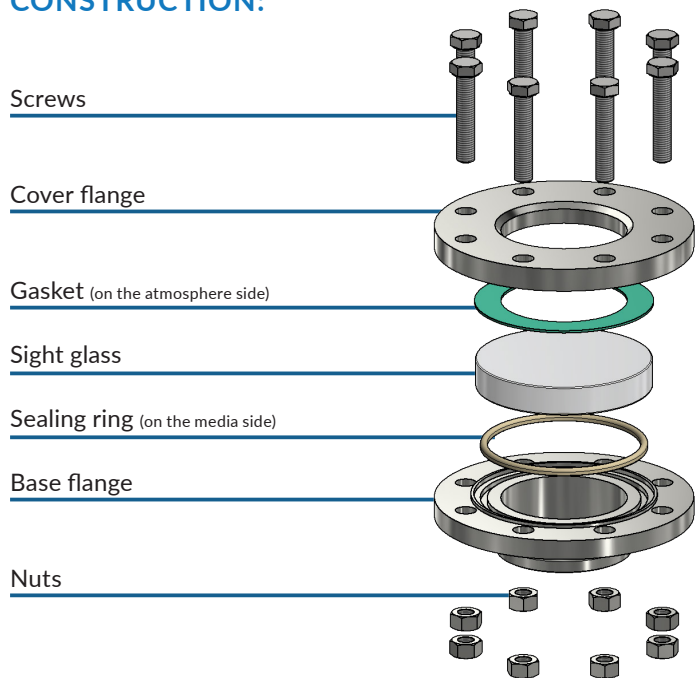
PN	DN	Da [mm]	Di [mm]	A [mm]	s [mm]	SEALING RING DESIGN	WEIGHT [kg]
16	15	95	17	21,3	2	D-ring DIN 11851	1,6
	20	105	22	26,9	2,3	D-ring DIN 11851	2,3
	25	115	28	33,7	2,6	D-ring DIN 11851	2,7
	32	140	37	42,4	2,6	D-ring DIN 11851	4,0
	40	150	43	48,3	2,6	O-ring	4,4
	50	165	54	60,3	2,9	O-ring	5,3
	65	185	70	76,1	2,9	D-ring DIN 11851	6,5
	80	200	83	88,9	3,2	D-ring DIN 11851	8,4
	100	220	107	114,3	3,6	D-ring DIN 11851	9,8
	125	250	132	139,7	4	D-ring DIN 11851	13,3
PS 10 ¹	150	285	160	168,3	4,5	O-ring	17,1
	200	340	207	219,1	6,3	O-ring	25,1
PS 6 ¹	250	405	260	273	6,3	O-ring	37,4
	300	460	310	323,9	7,1	O-ring	49,3
	350	520	340	355,6	8	O-ring	70

1) max. operating pressure 6 bar(g) resp. 10 bar(g) for these nominal sizes

DRAWING:



CONSTRUCTION:



PRODUCT CODE:

Example explaining the code composition.

11-390V-13-1-2-1-1-0

GROUP	TYPE	NOMINAL SIZE	PN	BASE FLANGE ¹	GLASS	GASKET	VARIANT
11	390V	1) 15	1) 16	2) 1.4571	1) Borosilicate glass ²	1) PTFE	000) Standard
		2) 20	2) Special	3) 1.4404	4) Borosilicate glass ³ + PTFE-wiper SGW	2) FKM	
		3) 25		4) 1.4301/7	5) Borosilicate glass ³ + Silicone-wiper SGW	3) NBR	
		4) 32		5) 1.4539	8) Borosilicate glass unhardened	5) Silicone	
		5) 40		6) 1.4462		6) EPDM	
		6) 50		7) 1.4435		8) Special	
		7) 65		8) 1.4541			
		8) 80		9) Special			
		9) 100					
		10) 125					
		11) 150					
		12) 200					
		13) 250					
		14) 300					
		15) 350					

1) Cover flange according to quotation/order confirmation.
2) According to DIN 7080
3) Similar to DIN 7080

i Unless otherwise specified, the highlighted work standard is delivered.

EXAMPLE:

11-390V-13-1-2-1-1-0 equivalent to:

- ACI Type 390V
- DN 250
- PN 16
- Base flange made of 1.4571
- Cover flange made of 1.4571
- Borosilicate glass DIN 7080 or similar
- Gasket PTFE O-ring
- Standard version**
- other equipment optional

💡 For aggressive media or steam, mica discs should be used to protect the glasses.

OPTIONALES EQUIPMENT:



Wiper SGW

with PTFE- or silicone wiper blade



Mica discs

up to 200°C with borosilicate glass
DIN 7080



LED lights

for Ex- and Non-Ex areas



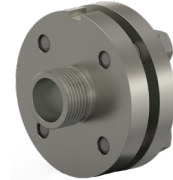
High pressure version

Type 390



Pipe attachment

Type 391



External thread connection

Type 392

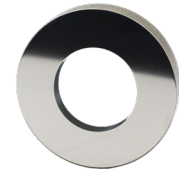


Internal thread connection

Type 394

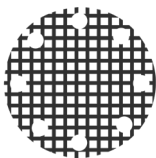


**FEP-protective screen or
FEP-coating**
for higher pH values

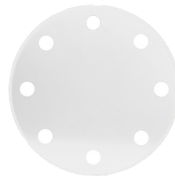


Metal fused safety sight glass

for chemical use



Grid impact protection window¹



PLEXIGLAS® impact protection

1) Punching in customer request