

Lightweight design with 50 mm wide viewing window

### USE:

Longitudinal sight glass fittings are used to observe and illuminate the inside of closed vessels (boilers, tanks, silos, etc.).

Sight glass fittings type 335 are oval longitudinal sight glass fittings for welding in or on, each completed with a sight glass plate inserted between the gaskets and screwed tight.

#### OPERATING CONDITIONS

<b>Temperature:</b> (depending on glass and gasket)	≤ 280°C	Borosilicate glass transparent similar DIN 7081
	> 280°C	on request
<b>Pressure:</b>	≤ 3 bar(g)	

#### MATERIALS

<b>Base frame:</b>	1.4571; 1.4404
<b>Glass:</b>	Borosilicate glass transparent similar DIN 7081
<b>Gasket:</b> <sup>1</sup>	PTFE; FKM; NBR; C4400; Silicone; EPDM; Graphite
<b>Screws:</b>	A4-70
Special materials on request	

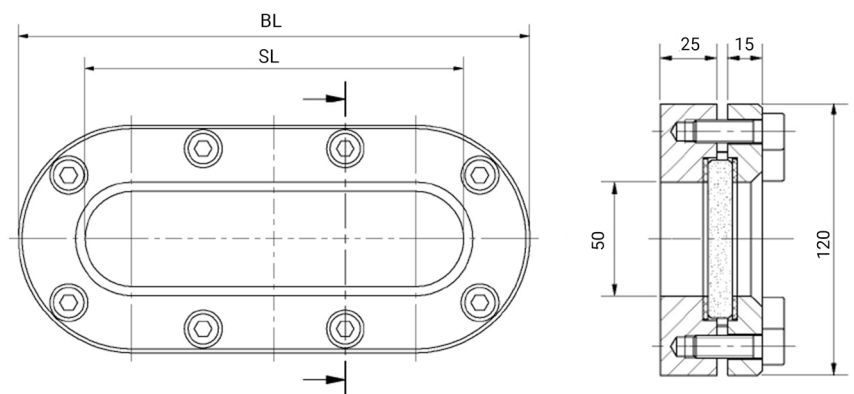
1) See „INFO-gasket“ leaflet

### INSTALLATION INSTRUCTIONS:

After welding in the base frame, check whether the sealing surface has warped. If necessary, this must be reworked!

Also observe the specified torques for the screw connection, according to the operating and maintenance instructions! The operating pressure does not apply to the base frame, this must be tested together with the pressure device according to AD leaflet B9!

### DRAWING:



BL [mm]	270	340	410	480	550	620	690	760
SL [mm]	200	270	340	410	480	550	620	690
Weight [kg]	6,3	7,9	9,5	11,1	12,7	14,2	15,8	17,4

### PRODUCT CODE:

Example explaining the composition of the code.

**11-335-480-2-1-4-000**

GROUP	TYPE	OVERALL LENGTH	BASE FRAME <sup>1</sup>	GLASS	GASKET	VARIANT
11	335	270	2) 1.4571	1) Borosilicate glass transparent similar	1) PTFE	000) Standard
		340	3) 1.4404	to DIN 7081	2) FKM	
		410	8) Special	6) Special	3) NBR	
		480			4) C4400	
		550			5) Silicone	
		620			6) EPDM	
		690			7) Graphite	
		760			8) Special	

1) Cover frame according to offer/order confirmation



Unless otherwise specified, the highlighted work standard is delivered.

### EXAMPLE:

**11-335-480-2-1-4-000 equivalent to:**

ACI Type 335

480 mm overall length

Base frame made of 1.4571

Cover frame made of 1.4571

Borosilicate glass transparent similar to DIN 7081

Gasket C4400

**Standard version**

- Special lengths possible on request
- other equipment optional

### CONSTRUCTION:

Screws

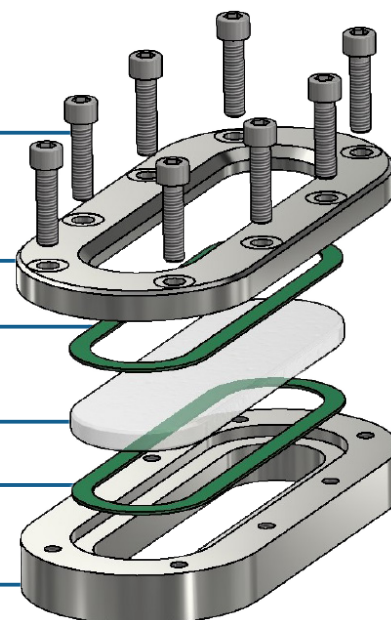
Cover frame

Gasket (on the atmosphere side)

Sight glass

Gasket (on the media side)

Base frame



### OPTIONAL EQUIPMENT:



**Mica discs**  
up to 300°C with borosilicate glass DIN  
7081 transparent



**Nearly cavity-free design**  
with stepped glass



**FEP-protective screen or  
FEP-coating**  
for higher pH values



For aggressive media or steam, mica lenses should be used to protect the glasses. (Not possible for reflective glasses, as this would cause them to lose their function).

#### ACI Industriearmaturen GmbH

✉ [info@aci24.com](mailto:info@aci24.com) ☎ +49 (0) 2461 91634 00  
 🌐 [www.aci24.com](http://www.aci24.com) 📠 +49 (0) 2461 91634 44  
 📍 Königskamp 19 · 52428 Jülich · Germany

#### Ebora BV Process Automation

✉ [info@ebora.nl](mailto:info@ebora.nl) ☎ +31 263 706 830  
 🌐 [www.ebora.nl](http://www.ebora.nl) 📠 +31 263 706 831  
 📍 Poort van Midden Gelderland Rood 8 · 6666 LT Heteren