

Similar to DIN 28121 with LRQA Deutschland GmbH (formerly Lloyd's Register Deutschland GmbH) design appraisal.

USE:

Container sight glasses type 322 are suitable for mounting on existing support flanges according to DIN EN 1092-1. The sight glasses are delivered pre-assembled at the factory and ready for installation. Our type 322 has a design appraisal by LRQA Deutschland GmbH (formerly Lloyd's Register Deutschland GmbH) in the nominal sizes DN 40, DN 50, DN 80 and DN 100.

INSTALLATION INSTRUCTIONS:

Gaskets matching the sealing surfaces should be used. The screw material should be of equal or higher grade than the sight glass flange. Always use screws that match the bore pattern! If possible, the screw thread and the screw head should be provided with screw lubrication.



Design appraisal in nominal sizes DN 40 to DN 100 and nominal pressure ratings PN 40 to PN 160.

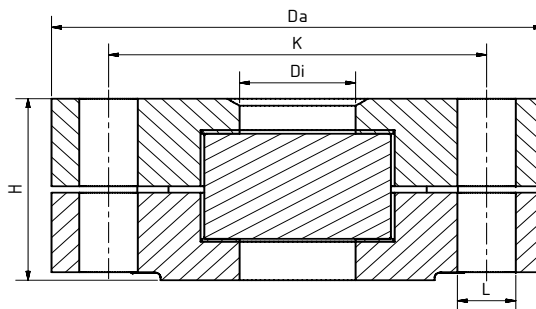
| OPERATING CONDITIONS | | |
|--|---|--|
| Temperature: (depending on glass and gasket) | ≤ 280°C | Borosilicate glass (DIN 7080 or similar) |
| | ≤ 300°C | Mica discs |
| Pressure: | ≤ 40 bar(g) up to 160 ¹ bar(g) | |

1) Higher pressure on request

| MATERIALS | |
|------------------------------|--|
| Base flange: | 1.4571; 1.4541; 1.4404; 1.4539; 2.4605 |
| Glass: | Borosilicate glass (DIN 7080 or similar) |
| Gasket: | Graphite |
| Screws: | A4-70 |
| Special materials on request | |

! The design appraisal by LRQA Deutschland GmbH (formerly Lloyd's Register Deutschland GmbH) does not replace the final acceptance of the entire plant!

DRAWING:



| DN | 40 ² | 50 ² | 80 ² | 100 ² |
|------------|----------------------------|-----------------|-----------------|------------------|
| Di | 40 | 50 | 80 | 100 |
| H (PN 40) | 84 | 84 | 84 | 104 |
| H (PN 63) | 84 | 84 | 84 | 104 |
| H (PN 100) | 84 | 104 | 104 | 104 |
| H (PN 160) | 94 | 104 | 104 | 121 |
| Da | According to DIN EN 1092-1 | | | |
| L | | | | |
| K | | | | |

2) With LRQA Deutschland GmbH (prev. Lloyd's Register Deutschland GmbH) design appraisal

PRODUCT CODE:

Example to explain the code composition.

11-322-4-100-1-1-7-0

| GROUP | TYPE | PN | NOMINAL SIZE | BASE FLANGE ² | GLASS | GASKET | VARIANT |
|-------|------|------------------------|---------------------|--------------------------|---|-------------------------|-------------|
| 11 | 322 | 1) 40 | DN 40 | 1) 1.4571 | 1) Borosilicate glass ³ | 7) Graphite | 0) Standard |
| | | 2) 63 | DN 50 | 2) 1.4541 | 2) Borosilicate glass ³ mica protected | 8) Special ¹ | |
| | | 3) 100 | DN 80 | 3) 1.4404 | 3) Special ¹ | | |
| | | 4) 160 | DN 100 | 4) 1.4539 | | | |
| | | 5) higher ¹ | larger ¹ | 5) 2.4605 | | | |
| | | | | 6) Special | | | |

1) Without LRQA Deutschland GmbH (formerly Lloyd's Register Deutschland GmbH) design appraisal
2) Cover flange according to offer/order confirmation
3) Similar to DIN 7080

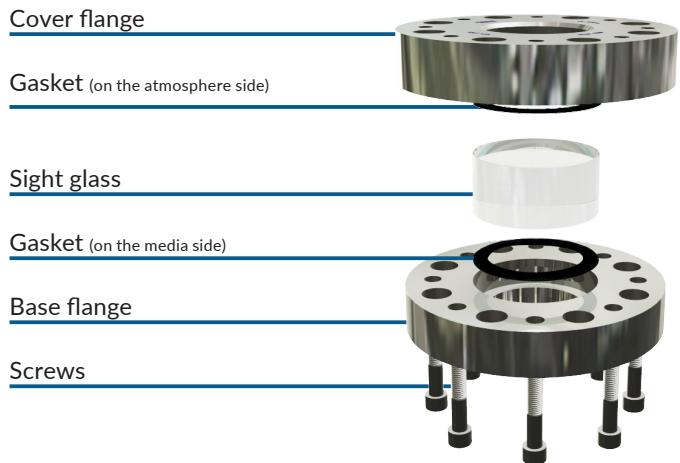
i Unless otherwise specified, the highlighted work standard is delivered.

EXAMPLE:

11-322-4-100-1-1-7-0 equivalent to:

- ACI Type 322
- PN 160
- DN 100
- Base flange made of 1.4571
- Cover flange made of 1.4571
- Borosilicate glass similar to DIN 7080
- Gasket graphite
- Standard version**
- other equipments optional

CONSTRUCTION:



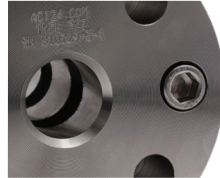
i For aggressive media or steam, mica discs should be used to protect the glasses.

OPTIONAL EQUIPMENT:



LED lights

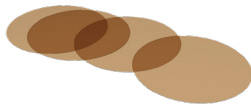
for Ex- and Non-Ex areas



Double glazing¹



Double glazing with heating element¹



Mica discs

up to 300°C with borosilicate glass DIN
7080

1) Without LRQA Deutschland GmbH (formerly Lloyd's Register Deutschland GmbH) design appraisal

ATTENTION!

The pressure-temperature limits according to DIN EN 1092-1 apply!

Our tool of the same name is available on our website for this purpose.
(www.ACI24.com, in the category Serci



ACI Industriearmaturen GmbH

✉ info@aci24.com ☎ +49 (0) 2461 91634 00
🌐 www.aci24.com 📠 +49 (0) 2461 91634 44
📍 Königskamp 19 · 52428 Jülich · Germany

Ebora BV Process Automation

✉ info@ebora.nl ☎ +31 263 706 830
🌐 www.ebora.nl 📠 +31 263 706 831
📍 Poort van Midden Gelderland Rood 8 · 6666 LT Heteren