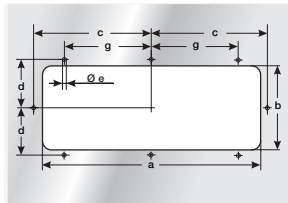
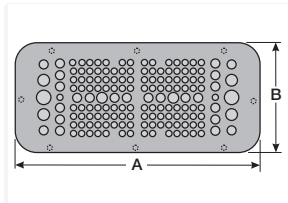
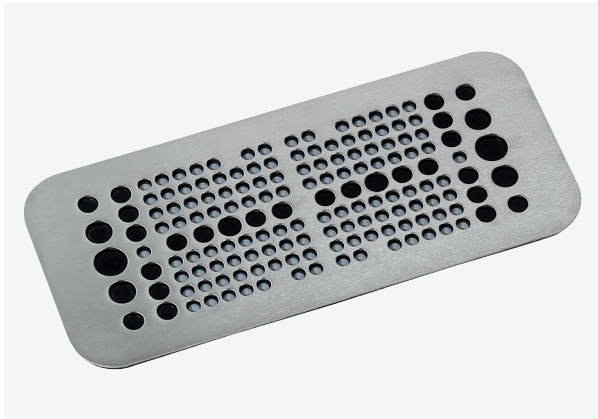




KDP cablequick® Type 149 (149x339 mm)



Product information

Efficient connection technology for terminal boxes, control cabinets for tool-free introduction of actuators, sensors, measuring and control instrumentation, optoelectronic, pneumatic cables and drive technology into a control panel. KDPs of product group 149 can be fitted directly into the standard cut-outs of Rittal cabinets.

The stainless steel version is particularly suitable for applications in the food and chemical industry. Integrated threaded bolts mean that no screws are visible from outside. Mounting set included in delivery.

Aluminium & Stainless Steel are approved for railway technology (NFPA 130)
V4A : 1.4571
ALU : 3.3535
ST : 1.0037
Rittal cut-out 4

Information, conformities and approvals

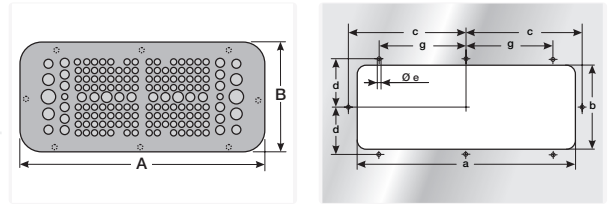


Article	Order No.	Color	No. Openings	Openings No. Ø mm	PU pcs.
KDP 149/158, Alu	87663089	Light gray	158	126x 3.5 mm – 6.2 mm 24x 6 mm – 10 mm 6x 8 mm – 12 mm 2x 12 mm – 18 mm	1
KDP 149/56, Alu	87663097	Light gray	56	36x 6 mm – 10 mm 8x 9 mm – 14 mm 8x 14 mm – 18 mm 4x 18 mm – 25 mm	1
KDP 149/78 ST ¹⁾	87663771	Light gray	78	30x 3.5 mm – 6.5 mm 40x 6 mm – 10 mm 4x 11 mm – 16 mm 2x 12 mm – 18 mm 2x 18 mm – 25 mm	1
KDP 149/56 V4A	87663086	Grinded	56	36x 6 mm – 10 mm 8x 9 mm – 14 mm 8x 14 mm – 18 mm 4x 18 mm – 25 mm	1
KDP 149/158 V4A	87663068	Grinded	158	126x 3.5 mm – 6.2 mm 24x 6 mm – 10 mm 6x 8 mm – 12 mm 2x 12 mm – 18 mm	1

¹⁾ no UR-approval



KDP cablequick® Type 149 (149x339 mm)



KDP metal cablequick® cable entry plate dimensions

Article	Order No.	A mm	B mm	a mm	b mm	c mm	d mm	e mm	g mm
KDP 149/158, Alu	87663089	339	149	303	115	161.5	66.5	5	120
KDP 149/56, Alu	87663097	339	149	303	115	161.5	66.5	5	120
KDP 149/78 ST ¹⁾	87663771	339	149	303	115	161.5	66.5	5	120
KDP 149/56 V4A	87663086	339	149	303	115	161.5	66.5	5	120
KDP 149/158 V4A	87663068	339	149	303	115	161.5	66.5	5	120

¹⁾ no UR-approval

Material properties



NBR / EPDM |

Thermal properties



Temperature / temperature range -30 °C – 90 °C

Protection class



Protection class IP65

Fire properties



Fire classification HB Housing; Seal:



Resistant to: Alcohol, Greases, Fuels, Lyes, Mineral oils, Weak acids

Technical information



LABS free



According to EN -2-1



KDP cablequick® Type 149 (149x339 mm)

Conformity



RoHS (EC Directive 2011/65/EU)

Approvals and operating permits



CSA approval

