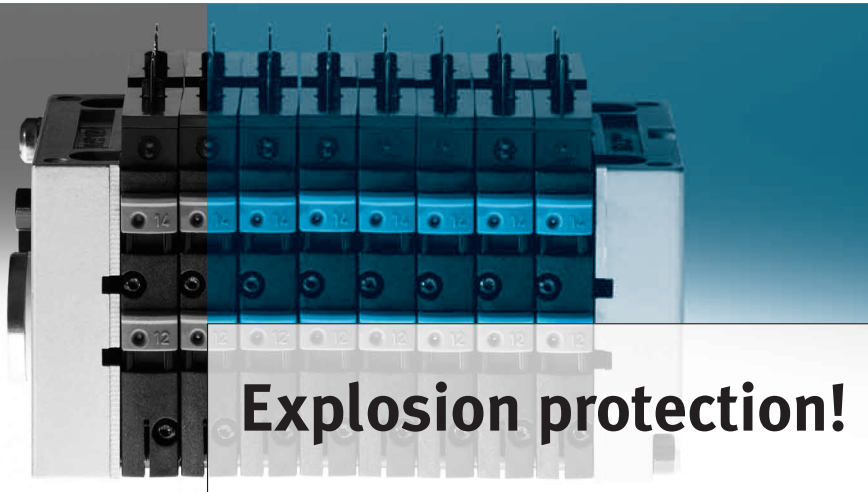


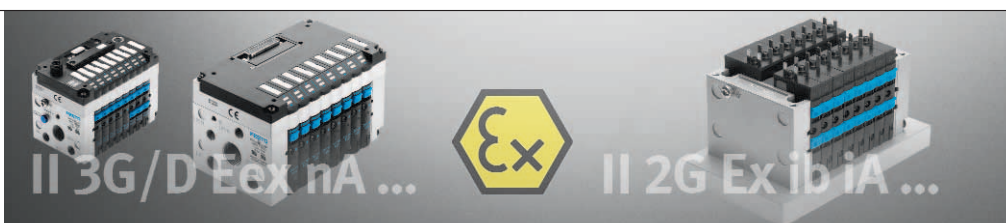
Valve terminal CPV10 Ex-i

FESTO



The CPV10 Ex-i valve terminal: intrinsically safe design for use in potentially explosive atmospheres in accordance with ATEX category 2 (zone 1). Ideal for very high flow rates in small spaces. Unique: the constructional design. For flexible combination of pneumatic features, electrical connection technologies and a wide range of mounting options.

- High flow rate in the smallest space
- Up to sixteen 3/2-way valves per valve terminal
- Highly diverse valve functions
- Time-saving mounting and installation concept
- Pneumatic multiple connector plate
- The CPV is especially well suited for decentralised system concepts
- Extremely sturdy thanks to metallic valve design
- Pneumatic multi-connector plate plus a suitable aperture, facilitates installation in control cabinets with IP65 sealing



Potentially explosive atmosphere: zone 2

Potentially explosive atmosphere: zone 1

213.4.PSI →

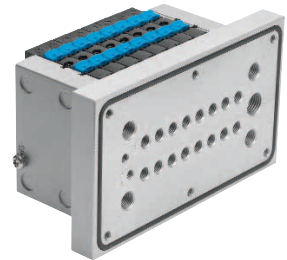
Product Short Information

Valve terminal CPV10 Ex-i

Technical Data

Type	ZONE 2 CPV10/CPV14/CPV18	ZONE 1 CPV10 Ex-i
Module order no.	18200/18210/18220	539506
Valve width in mm	10/14/18	10
Flow rate in l/min	400/800/1600	400
Electrical connection	Individual, multi-pin, field bus	Individual connection
Valve functions	2x 2/2-way, 2x 3/2-way, 5/2-way, single and double solenoid, 5/3-way mid-position valve, vacuum generator and 2/2-way valve for ejector pulse, vacuum generator	Two 3/2-way, 5/2-way, single and double solenoid, Two 2/2-way,
Pneumatic multi-connector plate	Yes	Yes
Operating pressure	-0.9 ... 10 bar	0 ... 10 bar
Pilot pressure	3 ... 8 bar	3 ... 8 bar
Manual override	Pushing, detenting, blocked	Pushing, detenting, blocked
LED display	Yes	No
Ambient temperature	-5 ... +50 °C	-5 ... +50 °C
Protection	IP65	IP40
Approvals	II 3G Ex nA II T4 X II 3D Ex tD A22 IP54 T110 °C	II 2G Ex ib IIC T5 -5 °C ≤ Ta ≤ 50 °C

CPV Ex-i with pneumatic multi-connector plate



The CPV valve terminal with pneumatic multi-connector plate, available in numerous variants, simplifies installation of pneumatic connections. Instead of using several bulkhead fittings and tubing connections, installation is possible via a single opening. Sealing ring provides IP65 protection for installation in enclosed cabinets.

CPV10 Ex-i use in hazardous locations

CPV10-Ex-i (type CPV10-EX-VI) is an intrinsically safe version of our CPV10 valve terminal for use in hazardous areas. It is installed, for example, with an intrinsically safe remote I/O system directly in the hazardous

area. The pneumatic multi-connector plate for control cabinets will allow the pneumatic installation to be separated from the control cabinet and thus greatly simplified. Suitable actuation methods include:

- Siemens ET200 iSP
 - ABB I/O System S900
 - BARTEC 17-584F-6200
 - Pepperl&Fuchs IS-RPI
 - Steel I.S.1. remote I/O system Type 9475
 - Steel Ex-i buffer stage Type 9175
 - Turck excom remote-I/O system
- Note: Technical changes reserved.



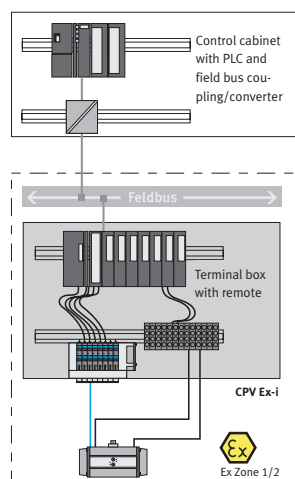
Supply ports and working ports on the pneumatic multi-connector plate



Supply ports on the valve terminal and working ports on the pneumatic multi-connector plate

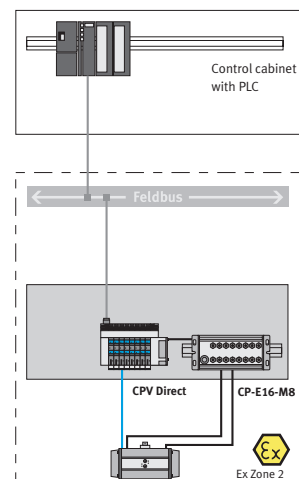
Use of the CPV10 Ex-i in zone 1/2

Intrinsically safe valve terminal (pneumatic multi-connector plate) and remote I/O in the control cabinet.



Use of the CPV10/14/18 in zone 2

Field bus valve terminal (pneumatic multi-connector plate) and I/O modules in the control cabinet.



Festo AG & Co. KG

Ruiter Strasse 82
73734 Esslingen
www.festo.com
Tel. +49 711 347-0
Fax +49 711 347-2144
service_international@festo.com